



FS
FLIGHT
CONTROL
www.fs-flightcontrol.com

FS-FlightControl

Handbuch

Instructor Operator Station

für Microsoft Flight Simulator, Prepar3D und X-Plane



FS-FlightControl · AB-Tools GmbH

E-mail: info@fs-flightcontrol.com · Internet: www.fs-flightcontrol.com

Marsstraße 78, 80335 München, Germany · Phone: +49 89 38898588 · Fax: +49 89 38898589

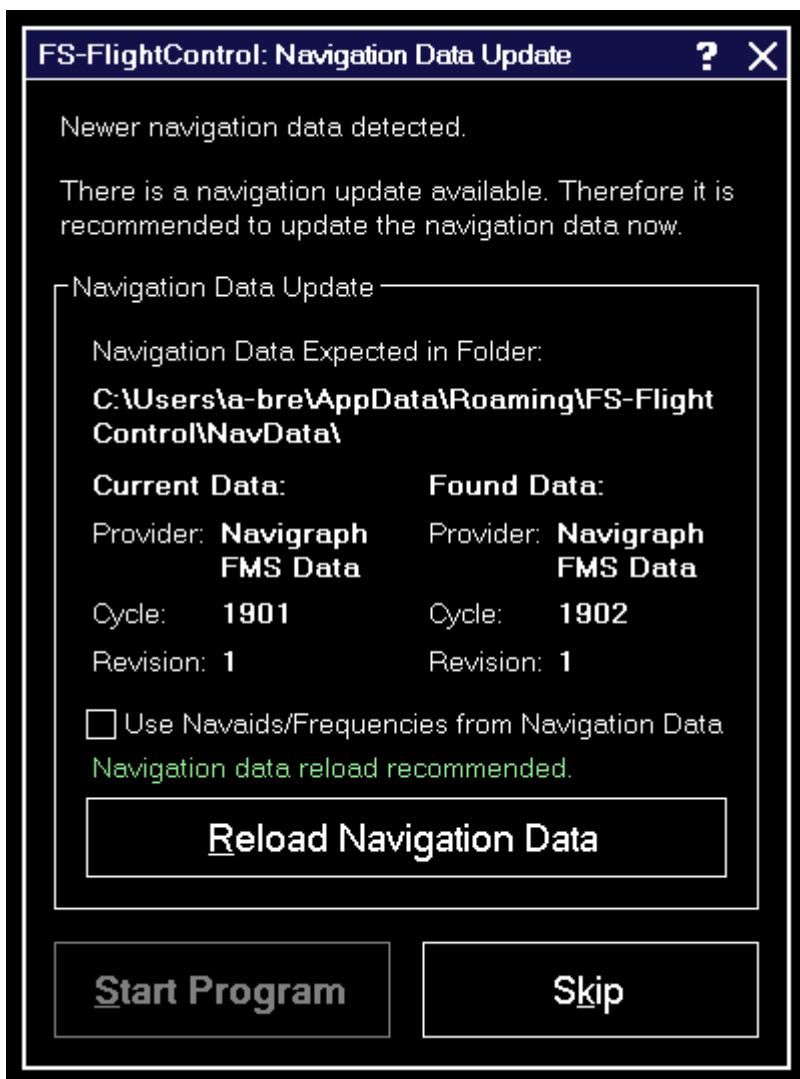
Bank Account: Grenke Bank AG · IBAN: DE 49 20130400 0060270139 · BIC: GREBDEH1XXX

Register: Amtsgericht München, HRB 202859 · Finance Office: München für Körperschaften · VAT ID DE273587389

Inhaltsverzeichnis

NAVIGATION DATA UPDATE	1
<i>Update Information</i>	1

NAVIGATION DATA UPDATE



The navigation data update dialog informs you about a new AIRAC data cycle that you can import to FS-FlightControl to have up-to-date waypoints and airways.

Update Information

Navigation Data Update

Navigation Data Expected in Folder:
C:\Users\A-bre\AppData\Roaming\FS-Flight Control\NavData

Current Data:	Found Data:
Provider: Navigraph FMS Data	Provider: Navigraph FMS Data
Cycle: 1901	Cycle: 1902
Revision: 1	Revision: 1

Use Nav aids/Frequencies from Navigation Data

Navigation data reload recommended.

Reload Navigation Data

This section shows the current and new data provider as well as some information about the data cycles involved.

It is recommended that you reload the navigation data whenever an update is available to always work with the latest waypoints and airways in FS-FlightControl.

FS-FlightControl Handbuch:
<https://www.fs-flightcontrol.com/de/handbuch/>

PDF erstellt am:
14.05.2026 05:39

