



FS
FLIGHT
CONTROL
www.fs-flightcontrol.com

FS-FlightControl

Handbuch

Instructor Operator Station

für Microsoft Flight Simulator, Prepar3D und X-Plane



FS-FlightControl · AB-Tools GmbH

E-mail: info@fs-flightcontrol.com · Internet: www.fs-flightcontrol.com

Marsstraße 78, 80335 München, Germany · Phone: +49 89 38898588 · Fax: +49 89 38898589

Bank Account: Grenke Bank AG · IBAN: DE 49 20130400 0060270139 · BIC: GREBDEH1XXX

Register: Amtsgericht München, HRB 202859 · Finance Office: München für Körperschaften · VAT ID DE273587389

Inhaltsverzeichnis

SIMCONNECT NETWORK WIZARD

Welcome Screen

Settings on Flight Simulator Computer

Create Network Share

Change Computer

Settings on FS-FlightControl Computer

1

1

2


3

4

4

SIMCONNECT NETWORK WIZARD

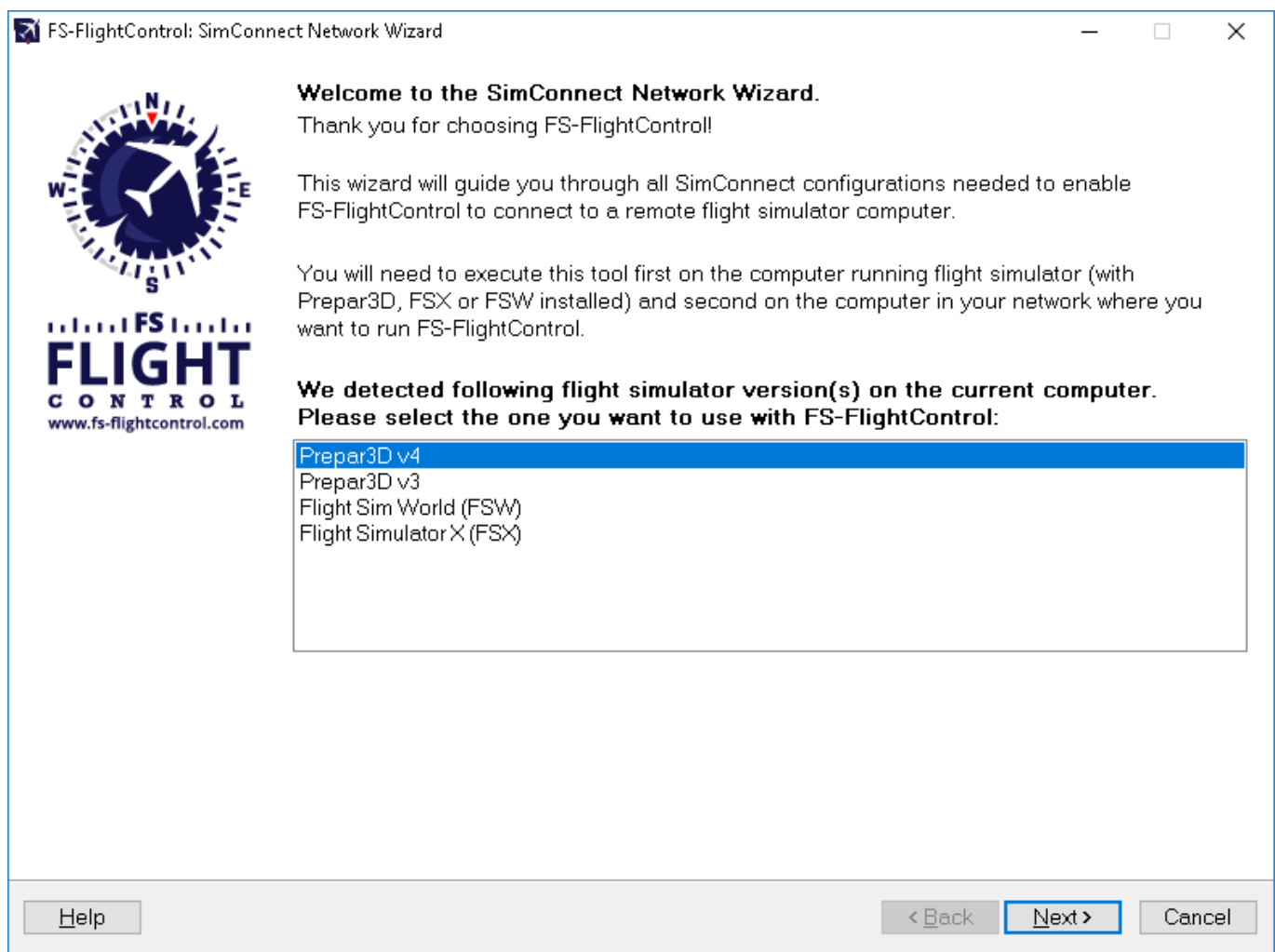
If you want to use FS-FlightControl on a computer other than the computer Prepar3D or FSX is running on, the SimConnect Network Wizard will guide you through everything needed to enable FS-FlightControl to connect to the remote flight simulator computer.

 **Note:** This is only needed if FS-FlightControl is not executed on the same computer as Prepar3D or FSX.

You will find the SimConnect Network Wizard below the folder FS-FlightControl in your Windows Documents folder.

Please first copy all files of the SimConnect Network Wizard to your computer where Prepar3D or FSX is installed and then execute the SimConnectNetworkWizard.exe.

Welcome Screen

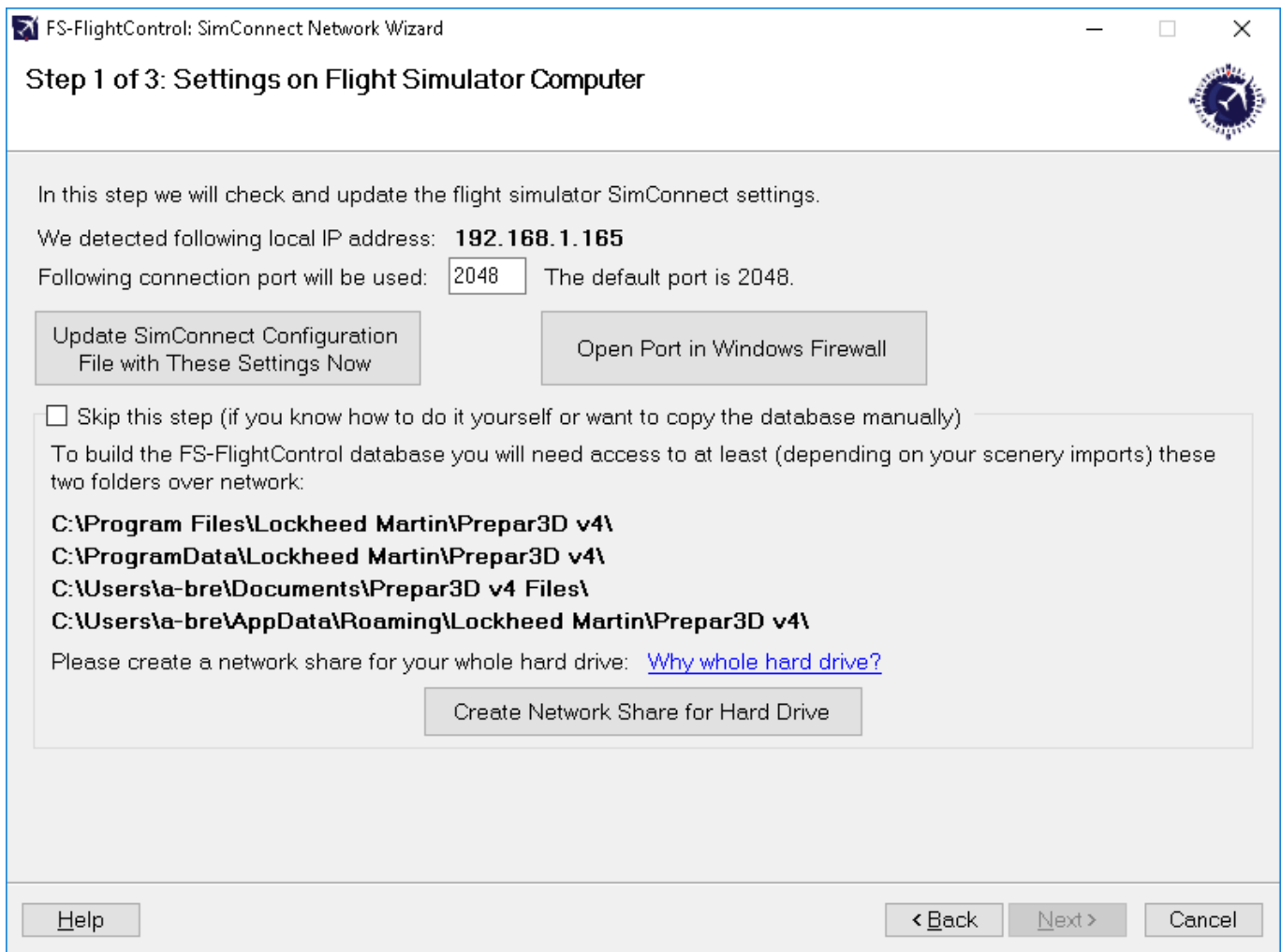


After you started the SimConnect Network Wizard this welcome screen will be displayed.

In case you have more than one compatible flight simulator software installed, please first select which one you would like to use together with FS-FlightControl.

Then please click on the button Next >.

Settings on Flight Simulator Computer



FS-FlightControl: SimConnect Network Wizard

Step 1 of 3: Settings on Flight Simulator Computer

In this step we will check and update the flight simulator SimConnect settings.

We detected following local IP address: **192.168.1.165**

Following connection port will be used: The default port is 2048.

☐ Skip this step (if you know how to do it yourself or want to copy the database manually)

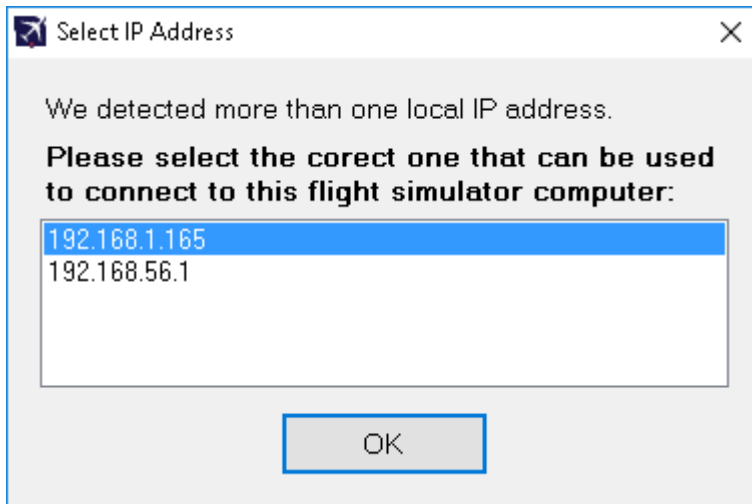
To build the FS-FlightControl database you will need access to at least (depending on your scenery imports) these two folders over network:

- C:\Program Files\Lockheed Martin\Prepar3D v4\
- C:\ProgramData\Lockheed Martin\Prepar3D v4\
- C:\Users\la-bre\Documents\Prepar3D v4 Files\
- C:\Users\la-bre\AppData\Roaming\Lockheed Martin\Prepar3D v4\


Please create a network share for your whole hard drive: [Why whole hard drive?](#)

On the next screen, the first step in the setup process, all settings on the flight simulator computer are done.

First the local IP address that will be used to connect to the flight simulator computer is being detected.



In case there is more than one IP address detected, this dialog will pop up asking you to choose the correct one.

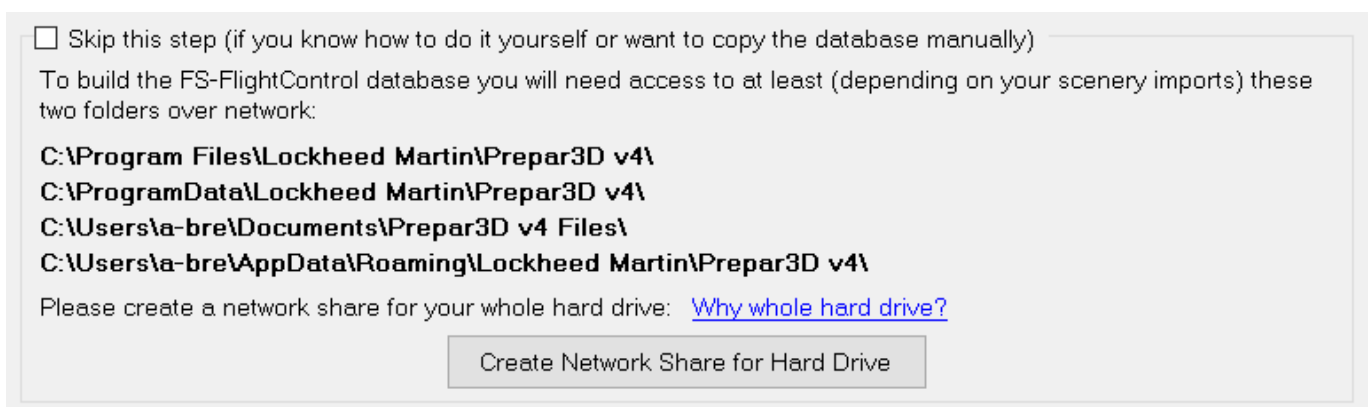
 **Note:** Only in rare cases there will be more than one detected. So normally everything is done automatically and you don't need to select anything here. But if this dialog is shown and you don't know which is the correct one, just try and if FS-FlightControl cannot connect with that, just run the wizard again and change the IP address.

Next the port is shown which will be used for connection.

By default port 2048 is used and you normally don't need to change that. But if this port cannot be used on your system for whatever reason, you can change it here.

Now please press the button **Update SimConnect Configuration File with These Settings** Now to store these network SimConnect settings. In case a SimConnect configuration exists on the computer already, you will be asked to overwrite it. Please confirm that (a backup copy will be created).

Create Network Share



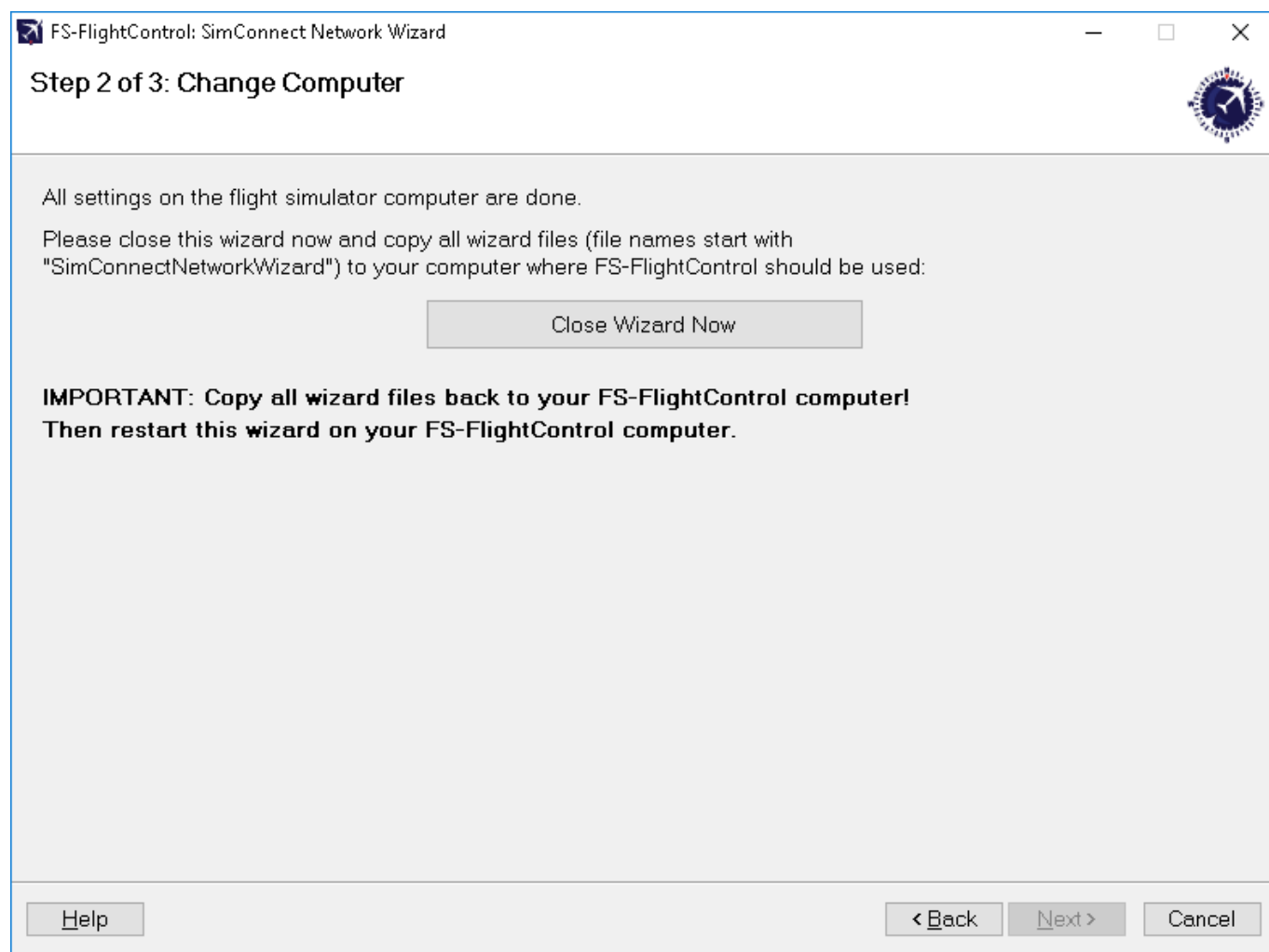
Beside accessing the flight simulator directly via SimConnect, you will also need to build the FS-FlightControl database that contains all the information about airports, navigation aids and so on. To be able to build that FS-FlightControl needs access some flight simulator directories.

Therefore you may create a hard drive network share in this wizard step as well by clicking on the

button Create Network Share for Hard Drive.


You can also do that manually if you want and for this case there is an option to skip this part of the configuration although we recommend to let the wizard create the network share automatically.

Change Computer

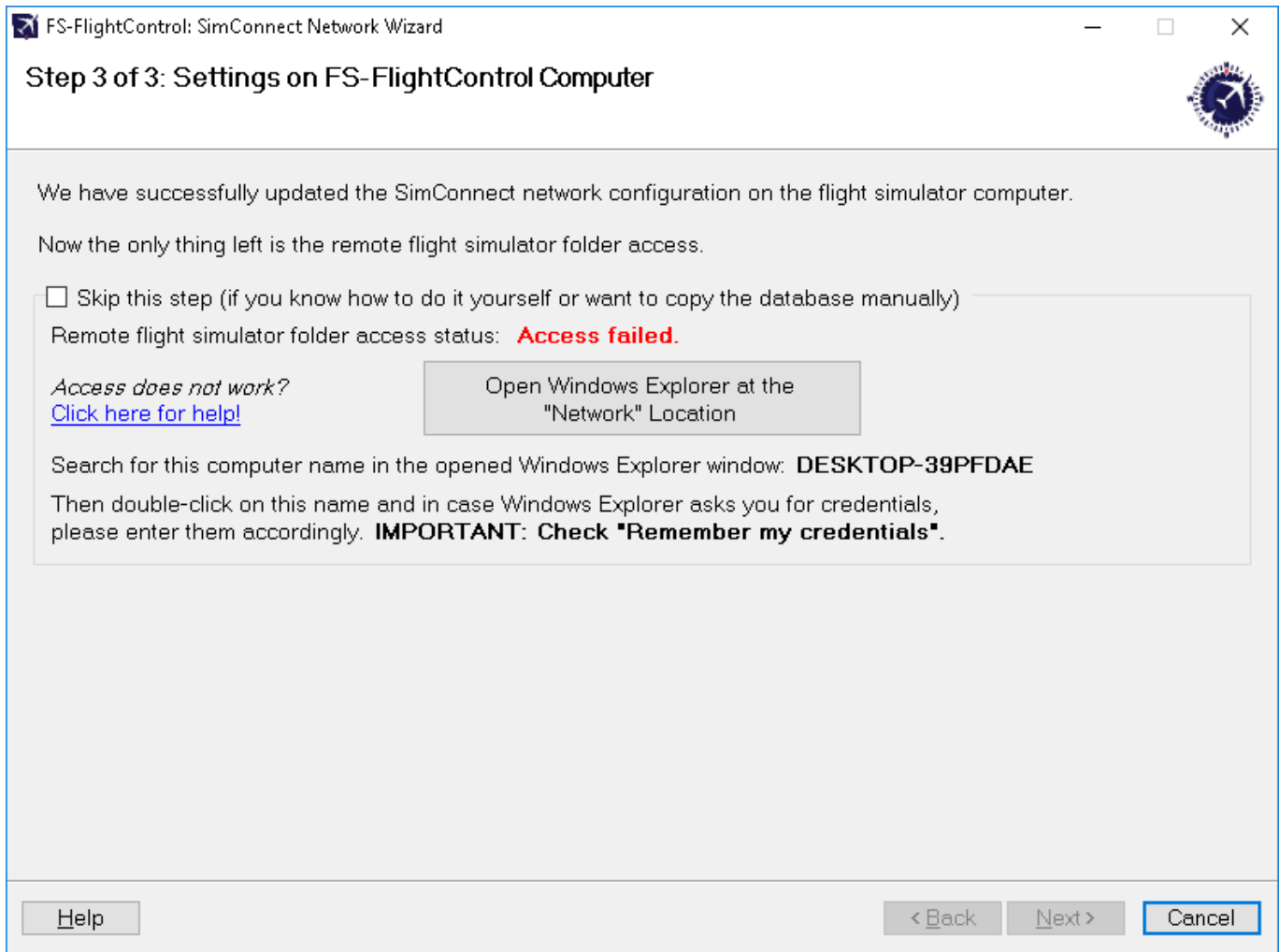


Now everything is done on the flight simulator computer and therefore it is time to go on with the computer that should run FS-FlightControl.

Therefore please close the wizard now, copy all files to the computer that should run FS-FlightControl and start the wizard there again.

 **Note:** It is important that you copy all wizard files to the other computer as they were changed and contain the connection information needed to setup the FS-FlightControl computer.

Settings on FS-FlightControl Computer



After you have started the wizard on your FS-FlightControl computer you should directly see this screen. Here we will finalize the configuration on the FS-FlightControl computer.

First please click on the button **Enable SimConnect for Remote Flight Simulator Access**. This will use all information collected on the flight simulator computer to setup SimConnect on your FS-FlightControl computer. In case a SimConnect configuration exists on the computer already, you will be asked to overwrite it. Please confirm that (a backup copy will be created).

FS-FlightControl Handbuch:

<https://www.fs-flightcontrol.com/de/handbuch/>

PDF erstellt am:

16.06.2025 23:30

