



FS  
**FLIGHT**  
CONTROL  
[www.fs-flightcontrol.com](http://www.fs-flightcontrol.com)

# FS-FlightControl Manual

## **Instructor Operator Station**

for Microsoft Flight Simulator, Prepar3D and X-Plane



**FS-FlightControl · AB-Tools GmbH**

E-mail: [info@fs-flightcontrol.com](mailto:info@fs-flightcontrol.com) · Internet: [www.fs-flightcontrol.com](http://www.fs-flightcontrol.com)

Marsstraße 78, 80335 München, Germany · Phone: +49 89 38898588 · Fax: +49 89 38898589

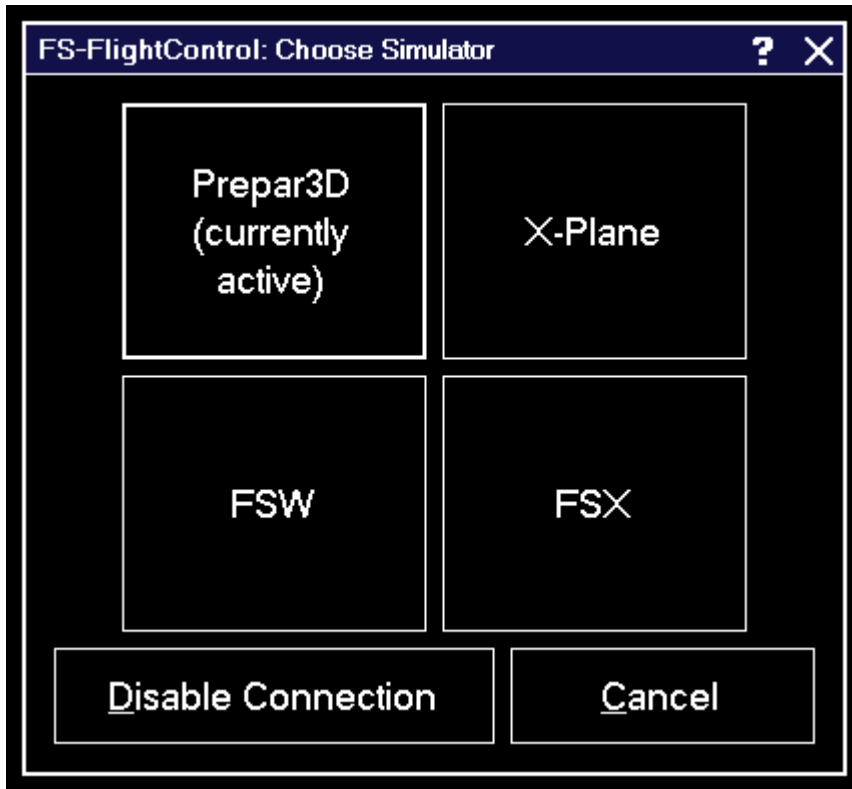
Bank Account: Volksbank Eisenberg eG · IBAN: DE 21 83094494 0000259926 · BIC: GENODEF1ESN

Register: Amtsgericht München, HRB 202859 · Finance Office: München für Körperschaften · VAT ID DE273587389

# Table of Contents

**Choose Simulator** ..... 1

# Choose Simulator



This dialog gives you the option to easily switch between the simulators that have been created in the [Settings](#) module.

You can also completely disable the simulator connection.

**FS-FlightControl Manual:**  
<https://www.fs-flightcontrol.com/en/manual/>

**PDF Generated on:**  
2021/04/18 16:48

