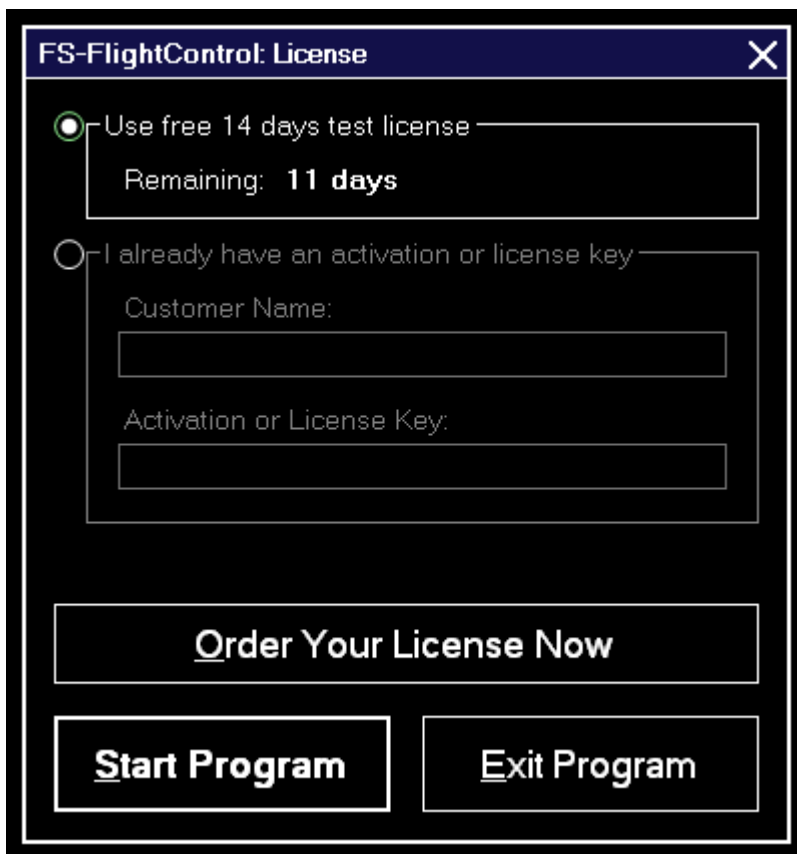


# Table of Contents

|                                  |   |
|----------------------------------|---|
| <b>License</b> .....             | 1 |
| <b><i>Test License</i></b> ..... | 1 |
| <b><i>License Data</i></b> ..... | 1 |

# License




Use this dialog to enter your FS-FlightControl license information and activate the product or check how long your test license is still valid.

## Test License



Here you can see how long your test license is still valid.

 **Note:** You can even still start the program after the test license has expired, but then it will close automatically after 5 minutes.


## License Data

I already have an activation or license key

Customer Name:

Activation or License Key:

After your purchased your license, you can enter your activation data into this section.

 Note: If you want to switch your license from one computer to another, just deactivate your license on the old computer in the [Info](#) module first.

**FS-FlightControl Manual:**  
<https://www.fs-flightcontrol.com/en/manual/>

**PDF Generated on:**  
2016/11/24 09:12

