



FS
FLIGHT
CONTROL
www.fs-flightcontrol.com

FS-FlightControl Manual

Instructor Operator Station

for Microsoft Flight Simulator, Prepar3D and X-Plane



FS-FlightControl · AB-Tools GmbH

E-mail: info@fs-flightcontrol.com · Internet: www.fs-flightcontrol.com

Marsstraße 78, 80335 München, Germany · Phone: +49 89 38898588 · Fax: +49 89 38898589

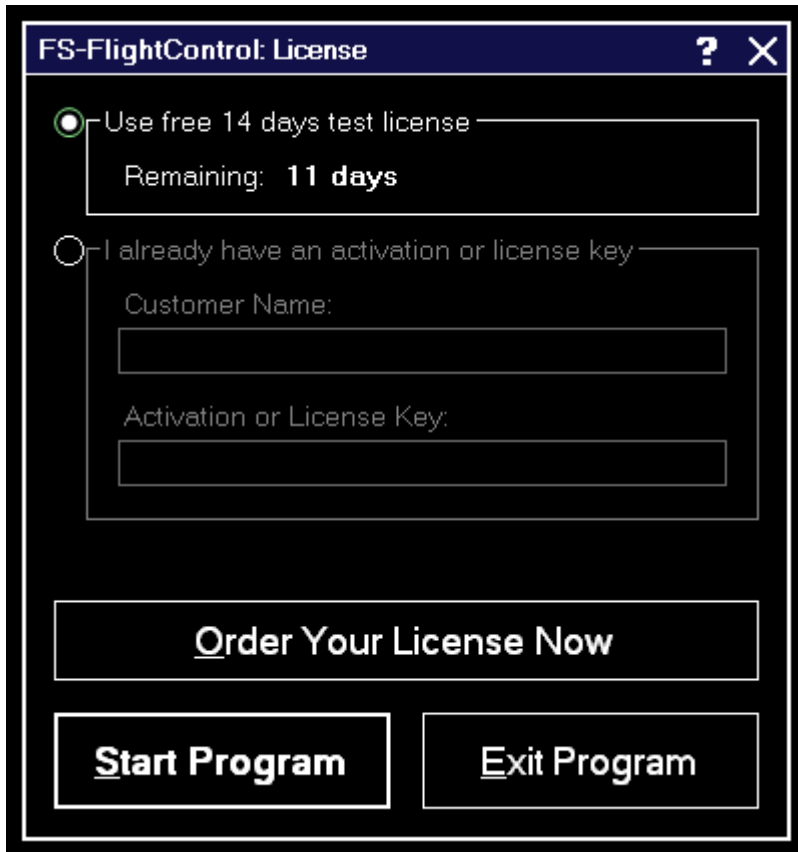
Bank Account: Grenke Bank AG · IBAN: DE 49 20130400 0060270139 · BIC: GREBDEH1XXX

Register: Amtsgericht München, HRB 202859 · Finance Office: München für Körperschaften · VAT ID DE273587389

Table of Contents

LICENSE	1
TEST LICENSE	1
LICENSE DATA	1

LICENSE




This dialog to enter your FS-FlightControl license information enables you to activate the product or check how long your test license is still valid.

TEST LICENSE



Here you can see how long your test license is still valid.

 **Note:** You can even still start the program after the test license has expired, but then it will close automatically after 5 minutes.


LICENSE DATA

I already have an activation or license key

Customer Name:

Activation or License Key:

After your purchased your license, you can enter your activation data into this section.

 Note: If you want to switch your license from one computer to another, just deactivate your license on the old computer in the **about** module first.

FS-FlightControl Manual:
<https://www.fs-flightcontrol.com/en/manual/>



PDF Generated on:
2026-05-14 04:51