



FS  
**FLIGHT**  
CONTROL  
[www.fs-flightcontrol.com](http://www.fs-flightcontrol.com)

# FS-FlightControl Manual

## **Instructor Operator Station**

for Microsoft Flight Simulator, Prepar3D and X-Plane



**FS-FlightControl · AB-Tools GmbH**

E-mail: [info@fs-flightcontrol.com](mailto:info@fs-flightcontrol.com) · Internet: [www.fs-flightcontrol.com](http://www.fs-flightcontrol.com)

Marsstraße 78, 80335 München, Germany · Phone: +49 89 38898588 · Fax: +49 89 38898589

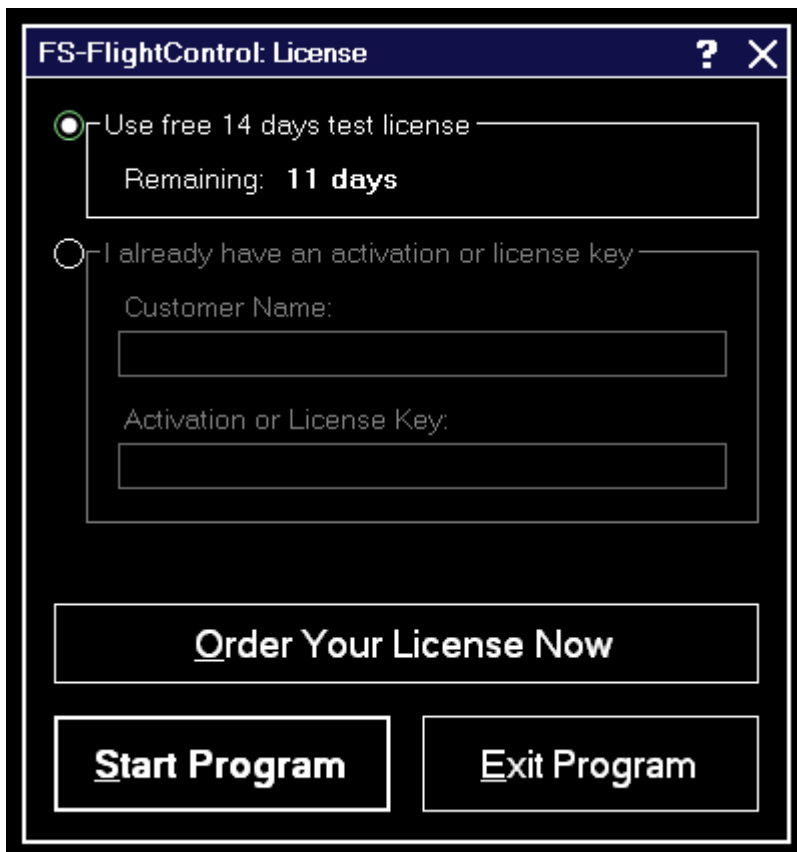
Bank Account: Grenke Bank AG · IBAN: DE 49 20130400 0060270139 · BIC: GREBDEH1XXX

Register: Amtsgericht München, HRB 202859 · Finance Office: München für Körperschaften · VAT ID DE273587389

# Table of Contents

<b>LICENSE</b> .....	1
<i>Test License</i> .....	1
<i>License Data</i> .....	1

# LICENSE




This dialog to enter your FS-FlightControl license information enables you to activate the product or check how long your test license is still valid.

## Test License



Here you can see how long your test license is still valid.

 **Note:** You can even still start the program after the test license has expired, but then it will close automatically after 5 minutes.


## License Data

I already have an activation or license key

Customer Name:

Activation or License Key:

After your purchased your license, you can enter your activation data into this section.

 Note: If you want to switch your license from one computer to another, just deactivate your license on the old computer in the **about** module first.

**FS-FlightControl Manual:**  
<https://www.fs-flightcontrol.com/en/manual/>



**PDF Generated on:**  
2026-05-14 04:51