



FS
FLIGHT
CONTROL
www.fs-flightcontrol.com

FS-FlightControl Manual

Instructor Operator Station

for Microsoft Flight Simulator, Prepar3D and X-Plane



FS-FlightControl · AB-Tools GmbH

E-mail: info@fs-flightcontrol.com · Internet: www.fs-flightcontrol.com

Marsstraße 78, 80335 München, Germany · Phone: +49 89 38898588 · Fax: +49 89 38898589

Bank Account: Grenke Bank AG · IBAN: DE 49 20130400 0060270139 · BIC: GREBDEH1XXX

Register: Amtsgericht München, HRB 202859 · Finance Office: München für Körperschaften · VAT ID DE273587389

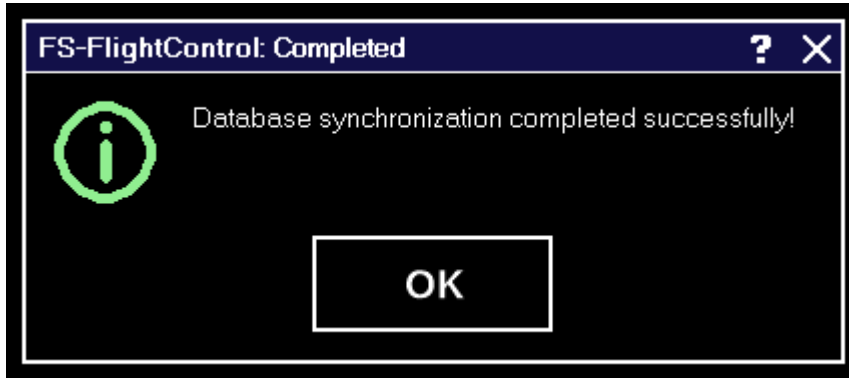
Table of Contents

MESSAGE BOX	1
<i>Success</i>	1
<i>Warning</i>	1
<i>Failed</i>	1
<i>Question</i>	2

MESSAGE BOX

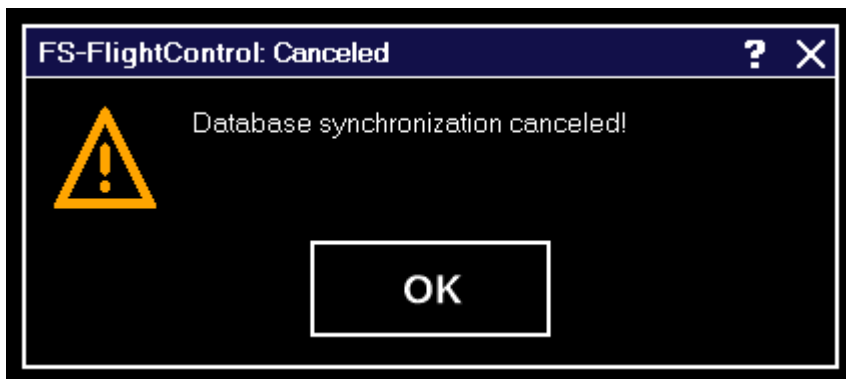
Message boxes are consistently displayed throughout the whole program as shown below.

Success



Message boxes reporting a successful event are shown like this.

Warning



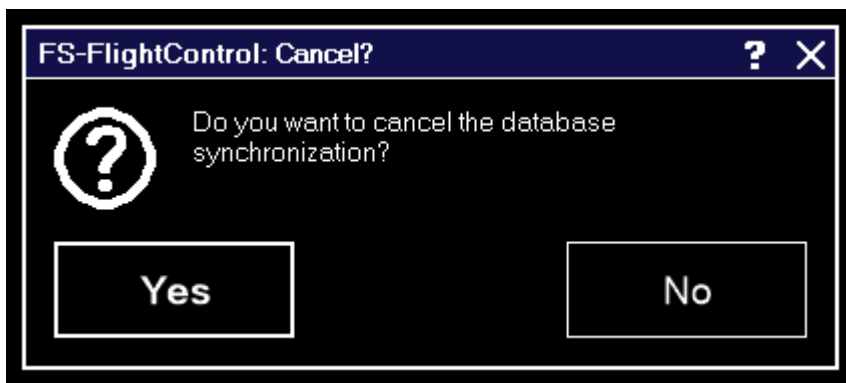
Warnings are displayed like this.

Failed



Failed events are displayed like this.

Question



And questions are shown like this.

FS-FlightControl Manual:
<https://www.fs-flightcontrol.com/en/manual/>

PDF Generated on:
2026-04-09 01:45

