



FS
FLIGHT
CONTROL
www.fs-flightcontrol.com

FS-FlightControl Manual

Instructor Operator Station
for Microsoft Flight Simulator, Prepar3D and X-Plane

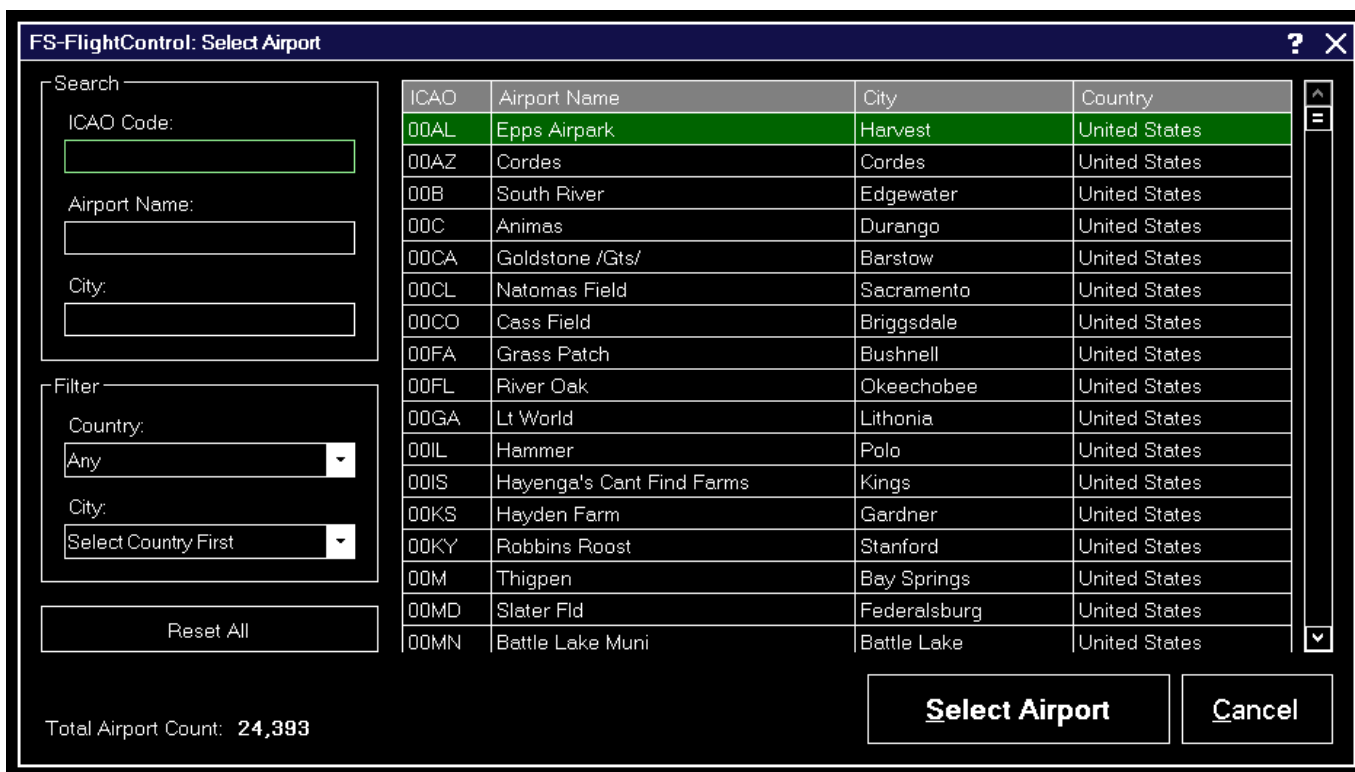


FS-FlightControl · AB-Tools GmbH
E-mail: info@fs-flightcontrol.com · Internet: www.fs-flightcontrol.com
Marsstraße 78, 80335 München, Germany · Phone: +49 89 38898588 · Fax: +49 89 38898589
Bank Account: Grenke Bank AG · IBAN: DE 49 20130400 0060270139 · BIC: GREBDEH1XXX
Register: Amtsgericht München, HRB 202859 · Finance Office: München für Körperschaften · VAT ID DE273587389

Table of Contents

SELECT AIRPORT	1
<i>Search</i>	1
<i>Filter</i>	2

SELECT AIRPORT



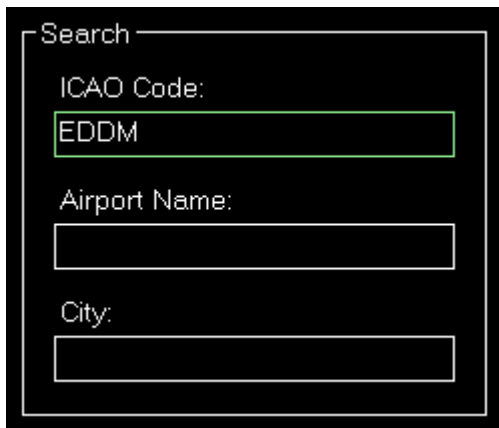
This dialog allows you to select a specific airport.

Use the button **Reset All** to clear your search and filter input that all airports are listed again.

For your information the total count of all airports is displayed at the bottom.

Note: The total count will only include airports that are actually listed based on selected **filter options**, but also active airport/runway restrictions in the **Settings** module.

Search



You can search for an airport by entering the ICAO code, airport name or city.

Filter



Filter

Country:
United States

City:
San Francisco

Alternatively you can also filter the list by selecting a country or city.

FS-FlightControl Manual:
<https://www.fs-flightcontrol.com/en/manual/>



PDF Generated on:
2026-04-15 05:58