



FS  
**FLIGHT**  
CONTROL  
[www.fs-flightcontrol.com](http://www.fs-flightcontrol.com)

# FS-FlightControl Manual

**Instructor Operator Station**  
for Microsoft Flight Simulator, Prepar3D and X-Plane



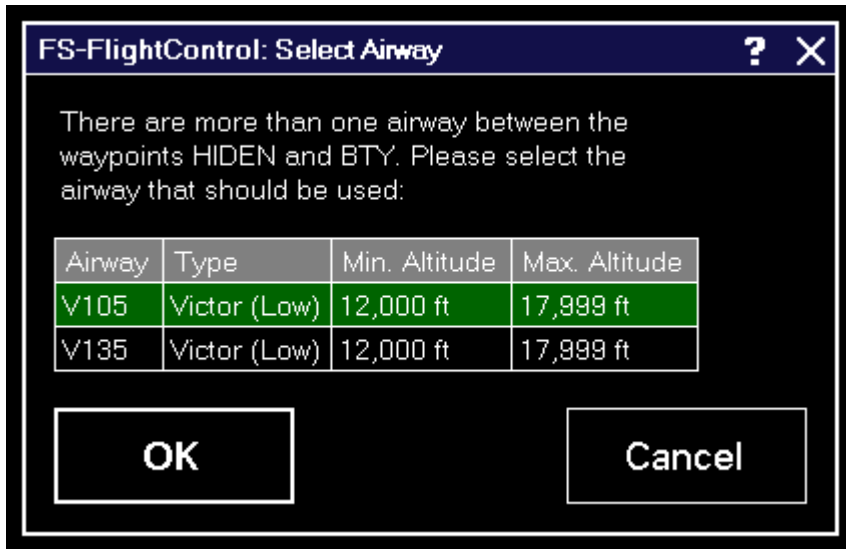
**FS-FlightControl · AB-Tools GmbH**  
E-mail: [info@fs-flightcontrol.com](mailto:info@fs-flightcontrol.com) · Internet: [www.fs-flightcontrol.com](http://www.fs-flightcontrol.com)  
Marsstraße 78, 80335 München, Germany · Phone: +49 89 38898588 · Fax: +49 89 38898589  
Bank Account: Grenke Bank AG · IBAN: DE 49 20130400 0060270139 · BIC: GREBDEH1XXX  
Register: Amtsgericht München, HRB 202859 · Finance Office: München für Körperschaften · VAT ID DE273587389

---

# Table of Contents

**SELECT AIRWAY** ..... 1

# SELECT AIRWAY



If between two flight plan waypoints there is more than one airway this select airway dialog will be displayed giving you the option to choose one.

**FS-FlightControl Manual:**  
<https://www.fs-flightcontrol.com/en/manual/>



**PDF Generated on:**  
2026-04-21 07:30