



FS
FLIGHT
CONTROL
www.fs-flightcontrol.com

FS-FlightControl

Manual

Instructor Operator Station

for Microsoft Flight Simulator, Prepar3D and X-Plane



FS-FlightControl · AB-Tools GmbH

E-mail: info@fs-flightcontrol.com · Internet: www.fs-flightcontrol.com

Marsstraße 78, 80335 München, Germany · Phone: +49 89 38898588 · Fax: +49 89 38898589

Bank Account: Grenke Bank AG · IBAN: DE 49 20130400 0060270139 · BIC: GREBDEH1XXX

Register: Amtsgericht München, HRB 202859 · Finance Office: München für Körperschaften · VAT ID DE273587389

Table of Contents

POSITION

Airport Selection

Directly by ICAO Code

Search for Airport

Airport Information

Runways or Helipads

Runway/Helipad Information

Approach Training

Helipads

SID and STAR Waypoints

Airworks

Custom Location

From Runway Landing Point

At Coordinate

Gate or Parking

Options

Flight Situation Presets

Create New Flight Situation Preset

Pop-Up Menu

Rename Flight Situation Preset

1

1

1

1

1

2

2

3

3

4

5

5

6

6

6

7

7

8

8

POSITION

Move your aircraft on an approach, to a runway takeoff point, on a helipad, a gate or parking position or any other custom geographical location you choose.

Airport Selection

There are two options to select an airport.

Directly by ICAO Code



Airport ICAO:

Just enter the ICAO code of the airport in the corresponding field and the airport will load immediately.

Alternatively you can also use the button Random to choose a random airport.

Search for Airport



Click on this button to open the **Select Airport** dialog.

Airport Information



Airport: **Munich**
Country: **Germany**
City: **Munich**

Here you can see the name, country as well as city of the currently selected airport.

Runways or Helipads

Runways and Helipads

08R (ILS)

26L (ILS)

08L (ILS)

26R (ILS)

Heli

Runway Information - Type of Surface: **Concrete**

Length: **13,097 ft** Altitude: **1,487 ft** Heading: **81°** ILS Frequency: **109.30 MHz**

Approach Training

SID, STAR Waypoints

Airwork

Custom Location

Approach Training

Downwind Left
4 NM, Back 1 NM

Take Off

Downwind Right
4 NM, Back 1 NM

Vectors Left
2 NM, Final 6 NM

3 NM Final

Vectors Right
2 NM, Final 6 NM

Base Left
4 NM, Final 6 NM


8 NM Final

Base Right
4 NM, Final 6 NM

Show Airport on Map

Show Airport METAR

Now you can choose on which runway or helipad you want your aircraft to be place.

 Note: This selection can also be directly accessed by the keyboard shortcut N.

Runway/Helipad Information


Runway Information - Type of Surface: **Concrete**

Length: **13,097 ft** Altitude: **1,487 ft** Heading: **81°** ILS Frequency: **109.30 MHz**

After selecting a runway some additional information about this runway is displayed.

For helipads this information is not displayed before you choose a specific helipad in the next step.

Approach Training

 Note: This option is only available if you chose a runway.

FS-FlightControl Manual: <https://www.fs-flightcontrol.com/en/manual/>




To start an approach training just click on one of the button to place your aircraft it the corresponding position.

If the runway is ILS enabled the correct altitude above ground will be calculated using the runway-specific glideslope degree. Otherwise the default of 3° will be used.

All parameters like distance to landing point for the two final positions, distance for the base positions or altitude above ground for the downwind positions can be configured in the **Settings** module.

Helipads

 Note: This option is only available if you chose Heli.



Click on one of the helipad buttons to place the aircraft on a helipad.

SID and STAR Waypoints

SID and STAR Waypoints

Procedure Type:

☒ Standard Instrument Departure (SID)
 ☐ Standard Terminal Arrival Route (STAR)
 ☐ Approach Transition (APPTR)
 ☐ Final Approach (FINAL)

Procedure Ident:

ALG2E.08R.ALG
 ANKE9E.08R.ANKER
 BIBA2E.08R.BIBAG
 EVIV3E.08R.EVIVA
 GIVM5E.08R.GIVMI
 INPU2E.08R.INPUD
 KIRD2E.08R.KIRDI
 MERS1P.08R.MERSI

^
=
▼

You can place your aircraft directly on a waypoint of a Standard Instrument Departure (SID) or Standard Terminal Arrival Route (STAR).

First select which the desired procedure type - SID oder STAR - and then the procedure ident. Finally you can select one waypoint of the procedure you have chosen.

SID and STAR Waypoints

Procedure Type:


☒ Standard Instrument Departure (SID)
 ☐ Standard Terminal Arrival Route (STAR)
 ☐ Approach Transition (APPTR)
 ☐ Final Approach (FINAL)

Procedure Ident: **BIBA2E.08R.BIBAG**

Waypoint Ident: **RATGI**

Move Aircraft to Waypoint

Now click on the button **Move Aircraft to Waypoint** to change the aircraft position accordingly.

 **Note:** The aircraft will be automatically set in a way that the heading matches the direction to the next waypoint in the procedure.

Airworks



Choose one of four pre-defined flight levels to start your airworks.

Of course, also these altitudes can be easily changed in the **Settings** module.

Custom Location

Custom Location

Altitude:

5000

ft

Heading:

220

°

☒ From Runway Landing Point

Angle:

60

°

Distance:

3

NM

☐ At Coordinates

Latitude:

48

N

21

'

13.62

"

Longitude:

11

E

47

'

9.91

"

Set Custom Location

If you want your aircraft to be place at a completely custom location, this is the right section for you.

First enter the desired altitude (above MSL) and heading of the aircraft. Then you can choose from two options to define the position.

From Runway Landing Point

From Runway Landing Point

Angle:

60

°

Distance:

30

NM

Using this option the aircraft will be move a definable distance away from the runway landing point in the entered direction.

At Coordinate



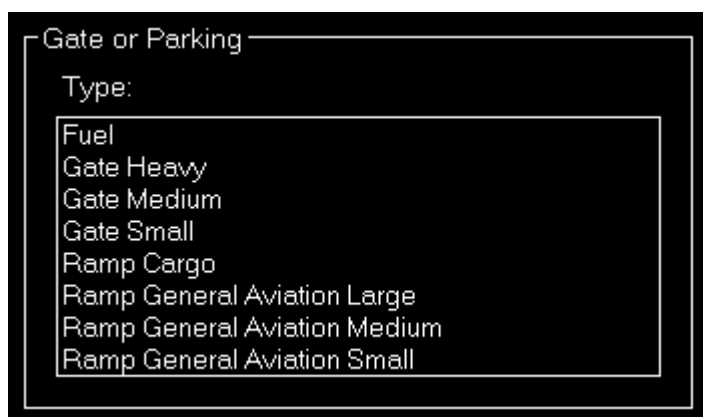
At Coordinates

Latitude:	48	N	21	13.62	"
Longitude:	11	E	47	9.91	"

Or you can just enter the exact geographic coordinates manually where you want the aircraft to be place.

The fields are pre-filled with the coordinates of the currently loaded airport.

Gate or Parking



Gate or Parking

Type:

- Fuel
- Gate Heavy
- Gate Medium
- Gate Small
- Ramp Cargo
- Ramp General Aviation Large
- Ramp General Aviation Medium
- Ramp General Aviation Small

You can also place your aircraft on a gate or parking position.

Therefore first select the type and then a specific gate or parking.



Gate or Parking

Type: **Gate Medium**

Gate or Parking: **Gate 102**

Move Aircraft to Gate or Parking

And then click on the button Move Aircraft to Gate or Parking to finally place the aircraft.

Options

Options

IAS: kt ☒ Set Gear: ☒ Down ☐ Override Altitude: Set: ☒ HDG ☒ CRS

Pitch: ° ☒ Set Flaps: ° ft MSL ☒ ILS Frequency

Here you can find several options like speed and gear/flaps status that are used when placing the aircraft.

All options are saved upon change and can even be defined on a per-aircraft level when aircraft profiles are enabled in the **Settings** module.

Use the button Show Airport on Map to switch to the **Map** module and center the map on the current airport.

Note: When aircraft is placed on ground gear is always extended and ILS frequency can only be set obviously if the runway is ILS enabled.

Flight Situation Presets

Flight Situation Presets

Approach EDDM 5 NM	Approach New York	SID KLAX HOLTZ9
STAR KJFK PARCH1	Take Off LA 25R	Take Off Tegel 26L
Back	Add	Next
Reset Current Flight Situation		

Here you can save the current flight situation including aircraft position, altitude, speed, heading as well as pitch and bank angle.

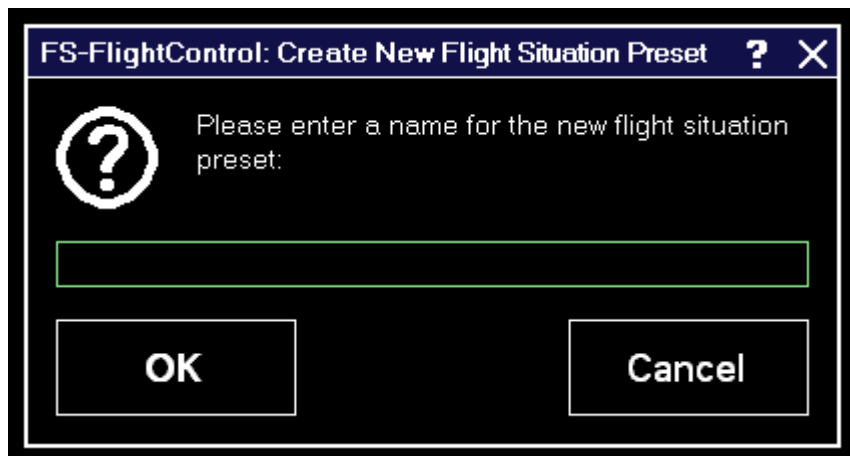
If there are more than 6 presets, you can page through them using the buttons Back and Next.

After clicking on the button Add to create a new situation preset or click on an existent one to send it to the flight simulator.

To reset the simulator you can use the button Reset Current Flight Situation.

Note: For X-Plane this is only available starting from X-Plane version 11.10.

Create New Flight Situation Preset



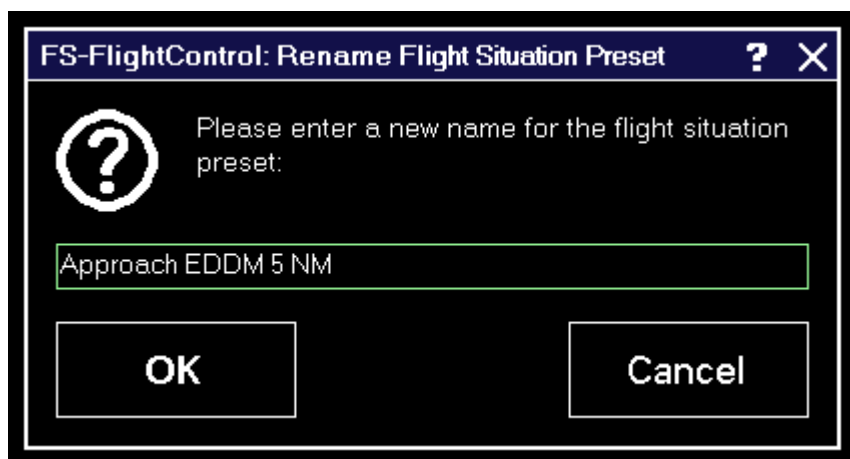
When creating a new flight situation preset, you need to enter a name for it in this dialog.

Pop-Up Menu



If you right click (long “touch”) on a flight situation preset this pop-up menu will be shown enabling you to rename or delete an existent flight situation preset again.

Rename Flight Situation Preset



Here you can set a new name for an existent flight situation preset.

FS-FlightControl Manual:
<https://www.fs-flightcontrol.com/en/manual/>

PDF Generated on:
2025-06-16 16:45

