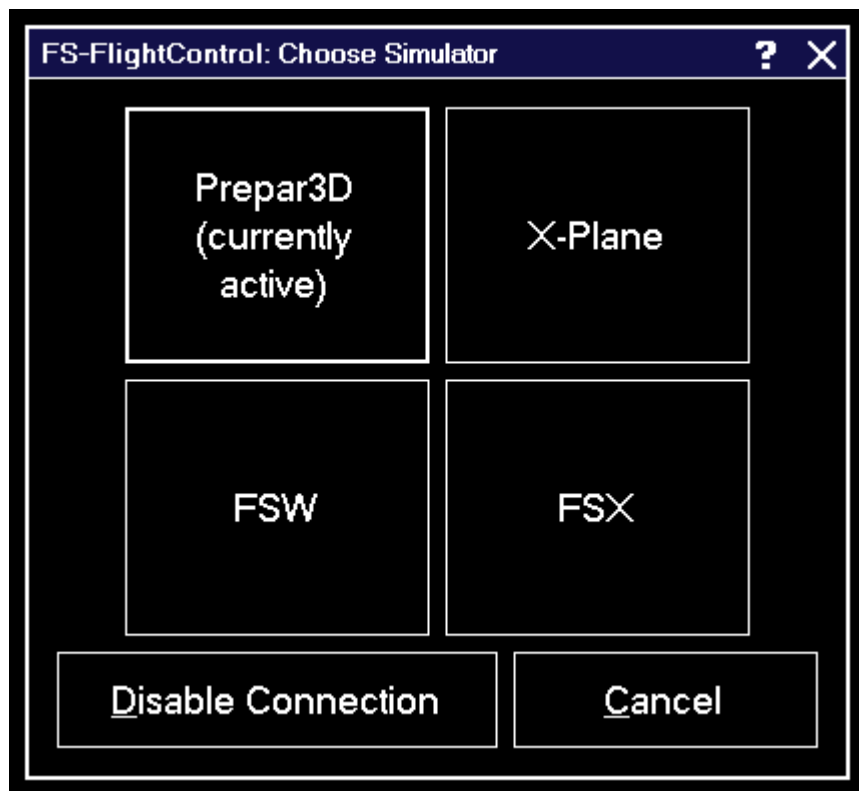


Table of Contents

Choose Simulator 1

Choose Simulator



This dialog gives you the option to easily switch between the simulators that have been created in the [Settings](#) module.

You can also completely disable the simulator connection.

FS-FlightControl Steam Products Manual:
<https://www.fs-flightcontrol.com/en/steam/manual/>



PDF Generated on:
2026/04/03 03:26