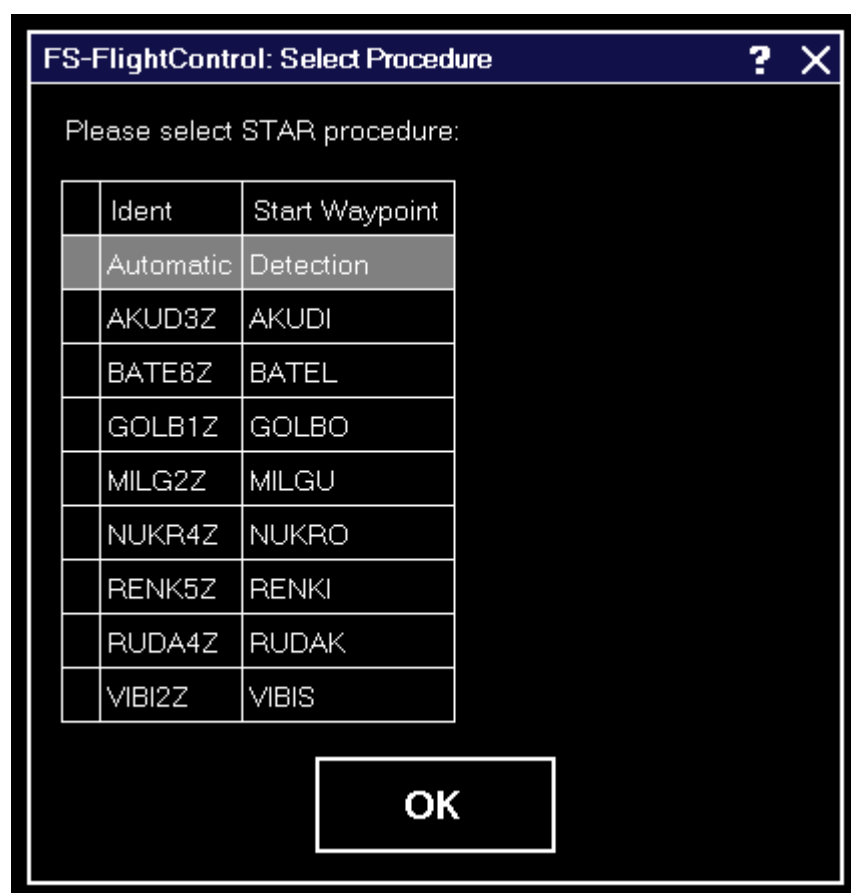


# Table of Contents

Select Procedure ..... 1

# Select Procedure



When an airway route using SIDs and STARs is calculated this dialog gives you the option to choose a specific SID or STAR.

Alternatively you can just leave it as Automatic Detection which will use the SID/STAR resulting in the shortest overall route distance.

## FS-FlightControl Steam Products Manual:

<https://www.fs-flightcontrol.com/en/steam/manual/>

## PDF Generated on:

2018/05/09 14:10

