

Table of Contents

- Position** 1
- Airport Selection** 1
 - Directly by ICAO Code 1
 - Search by Country and City 1
- Runways or Helipads** 1
 - Runway/Helipad Information 2
 - Approach Training 2
 - Helipads 3
 - SID and STAR Waypoints 3
 - Airworks 4
 - Custom Location 5
 - From Runway Landing Point 5
 - At Coordinate 6
- Gate or Parking** 6
- Options** 6
- Flight Situation Presets** 7
 - Create New Flight Situation Preset 7
 - Pop-Up Menu 8
 - Rename Flight Situation Preset 8

Position

Move your aircraft on an approach, to a runway takeoff point, on a helipad, a gate or parking position or any other custom geographical location you choose.

Airport Selection

There are two options to select an airport.

Directly by ICAO Code



Airport ICAO:

Just enter the ICAO code of the airport in the corresponding field and the airport will load immediately.

Alternatively you can also use the button Random to choose a random airport.

Search by Country and City



If you don't know the ICAO code of the airport, you can also select an airport based on the country and the next big city the airport belongs to: Just first select the country, then the city and finally pick an airport from the list.

Runways or Helipads

Runways and Helipads

08R (ILS)	26L (ILS)	08L (ILS)	26R (ILS)	Heli
-----------	-----------	-----------	-----------	------

Runway Information - Type of Surface: **Concrete**
 Length: **13,097 ft** Altitude: **1,487 ft** Heading: **81°** ILS Frequency: **109.30 MHz**

Approach Training

Approach Training	Downwind Left 4 NM, Back 1 NM	Take Off	Downwind Right 4 NM, Back 1 NM
SID, STAR Waypoints	Vectors Left 2 NM, Final 6 NM	3 NM Final	Vectors Right 2 NM, Final 6 NM
Airwork	Base Left 4 NM, Final 6 NM	8 NM Final	Base Right 4 NM, Final 6 NM

Custom Location

Show Airport on Map

Show Airport METAR

Now you can choose on which runway or helipad you want your aircraft to be place.

 Note: This selection can also be directly accessed by the keyboard shortcut N.

Runway/Helipad Information

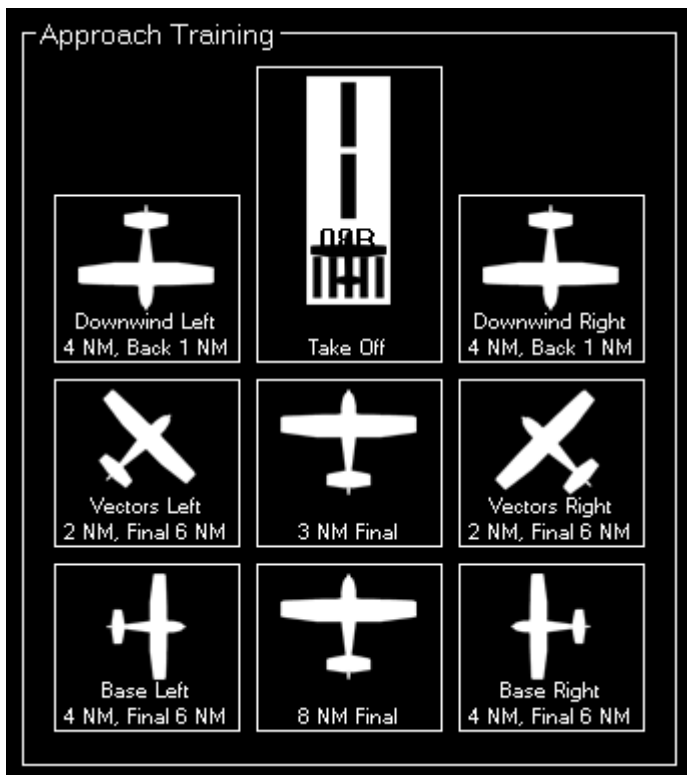
Runway Information - Type of Surface: **Concrete**
 Length: **13,097 ft** Altitude: **1,487 ft** Heading: **81°** ILS Frequency: **109.30 MHz**

After selecting a runway some additional information about this runway is displayed.

For helipads this information is not displayed before you choose a specific helipad in the next step.

Approach Training

 Note: This option is only available if you chose a runway.




To start an approach training just click on one of the button to place your aircraft it the corresponding position.

If the runway is ILS enabled the correct altitude above ground will be calculated using the runway-specific glideslope degree. Otherwise the default of 3° will be used.

All parameters like distance to landing point for the two final positions, distance for the base positions or altitude above ground for the downwind positions can be configured in the [Settings](#) module.

Helipads

 Note: This option is only available if you chose HeLi.



Click on one of the helipad buttons to place the aircraft on a helipad.

SID and STAR Waypoints



You can place your aircraft directly on a waypoint of a Standard Instrument Departure (SID) or Standard Terminal Arrival Route (STAR).

First select which the desired procedure type - SID oder STAR - and then the procedure ident. Finally you can select one waypoint of the procedure you have chosen.



Now click on the button `Move Aircraft to Waypoint` to change the aircraft position accordingly.

 **Note:** The aircraft will be automatically set in a way that the heading matches the direction to the next waypoint in the procedure.

Airworks



Choose one of four pre-defined flight levels to start your airworks.

Of course, also these altitudes can be easily changed in the [Settings](#) module.

Custom Location



If you want your aircraft to be placed at a completely custom location, this is the right section for you.

First enter the desired altitude (above MSL) and heading of the aircraft. Then you can choose from two options to define the position.

From Runway Landing Point



Using this option the aircraft will be move a definable distance away from the runway landing point in the entered direction.

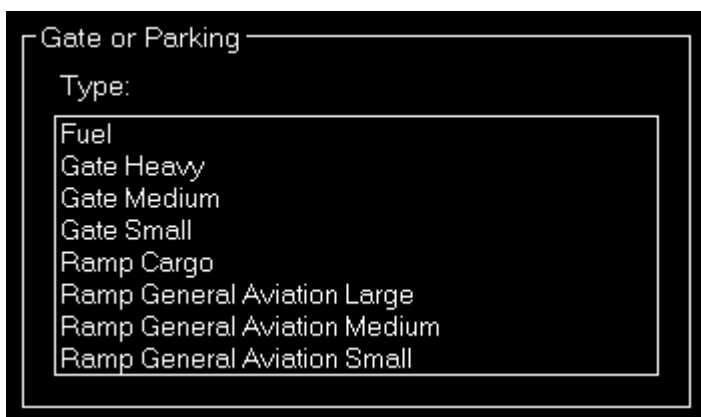
At Coordinate



Or you can just enter the exact geographic coordinates manually where you want the aircraft to be place.

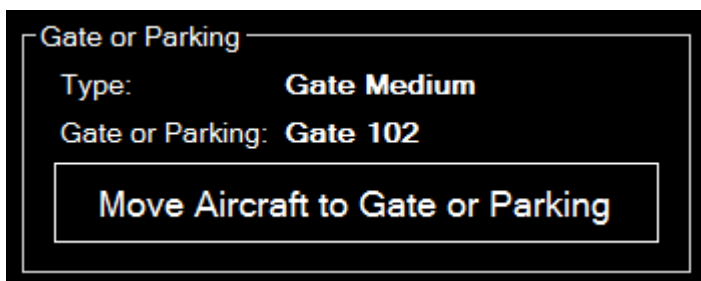
The fields are pre-filled with the coordinates of the currently loaded airport.

Gate or Parking



You can also place your aircraft on a gate or parking position.

Therefore first select the type and then a specific gate or parking.



And then click on the button Move Aircraft to Gate or Parking to finally place the aircraft.


Options



Here you can find several options like speed and gear/flaps status that are used when placing the aircraft.

All options are saved upon change and can even be defined on a per-aircraft level when aircraft profiles are enabled in the [Settings](#) module.

Use the button Show Airport on Map to switch to the [map](#) module and center the map on the current airport.

 Note: When aircraft is placed on ground gear is always extended and ILS frequency can only be set obviously if the runway is ILS enabled.

Flight Situation Presets



Here you can save the current flight situation including aircraft position, altitude, speed, heading as well as pitch and bank angle.

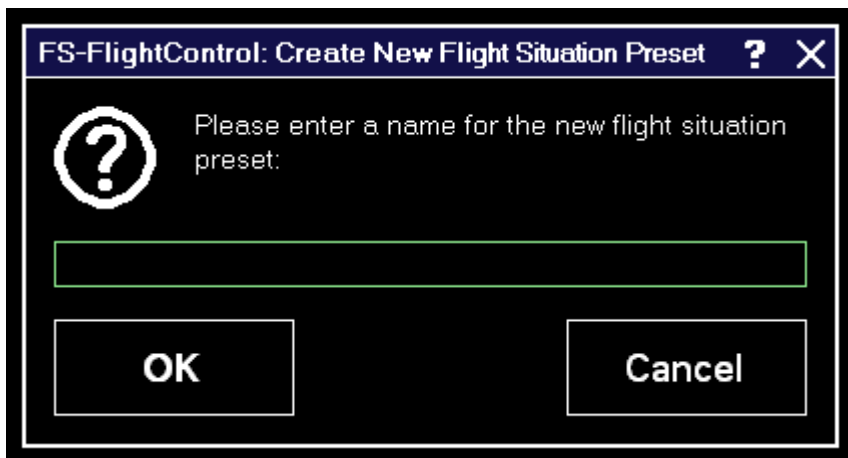
If there are more than 6 presets, you can page through them using the buttons Back and Next.

After clicking on the button Add to create a new situation preset or click on an existent one to send it to the flight simulator.

To reset the simulator you can use the button Reset Current Flight Situation.

 Note: For X-Plane this is only available starting from version 11.10.

Create New Flight Situation Preset



When creating a new flight situation preset, you need to enter a name for it in this dialog.

Pop-Up Menu



If you right click (long "touch") on a flight situation preset this pop-up menu will be shown enabling you to rename or delete an existent flight situation preset again.

Rename Flight Situation Preset



Here you can set a new name for an existent flight situation preset.

FS-FlightControl Steam Products Manual:
<https://www.fs-flightcontrol.com/en/steam/manual/>

PDF Generated on:
2026/04/03 03:52

