

Table of Contents

- Settings** 1
- Simulator Related Settings** 1
- Simulator 1
- Select Simulator Type 1
- Simulator Settings for Prepar3D/FSX/FSW 2
- Simulator Settings for X-Plane 4
- Position 6
- General 6
- Conditions 7
- Weather Engine 7
- Third Party 7
- ProSim 7
- AST 7
- Project Magenta 8
- Flight Sim Labs 8
- Brunner Elektronik 8
- Active Sky 9
- PFPX 9
- Aerosoft Airbus 9
- Wilco Airbus 9
- Mindstar 9
- Flight1 10
- General 10
- Aircraft Related Settings** 10
- Aircraft Profile 10
- Profile Settings 11
- Position 11
- Final Position 11
- Vectors Position 12
- Base Position 12
- Downwind Position 12
- Airworks 13
- Options on Position Change 13
- Map Colors 14
- Colors and Text Settings 14
- Map Other 18
- Auto Zoom 18
- Aircraft Display 18
- Compass Rose 19
- Other 19
- Pushback 20
- Speed Options 20
- Failures 20
- Failures Source 20
- Aircraft 20
- Aircraft Warnings 20
- Aircraft-Specific Options 21
- Other 21

- Statistics 22
 - Google Earth Export 22
- Other Settings** 22
- Position 22
 - General 22
 - Flight Situation Presets 23
- Map 23
 - Data Update Rate 23
 - Grid and Minimum Sector Altitude (MSA) Display 24
 - Print Options 24
 - Display Options 24
 - Online Networks 25
- Flight Plan 25
 - Flight Plan Folder 25
- Conditions 26
 - Real-Time Weather Source 26
 - ILS Visibility 26
- Failures 27
 - Color Settings 27
 - Other 27
- Statistics 27
 - Color Settings 27
 - Print Options 28
- Network 29
 - FS-FlightControl Client 29
 - Program Close Options 30
 - Status Page for Web Display 30
- Mobile Devices 32
 - Android and iOS Client 32
- Units 33
 - Altitude Unit 33
 - Temperature Unit 33
 - Atmospheric Pressure 33
 - Short Distance Unit 33
 - Far Distance Unit 34
 - Weight Unit 34
 - Speed Unit 34
 - Liquid/Fuel Unit 34
 - Visibility Unit 35
- Other 35
 - Input and Help 35
 - Program Startup Options 35
 - Online Network Status URLs 36
 - Color Settings 36
 - Unpause Delay 36

Settings

Customize this program to your needs with detailed, even aircraft-specific settings. Change map colors, SimConnect settings and many more options available.

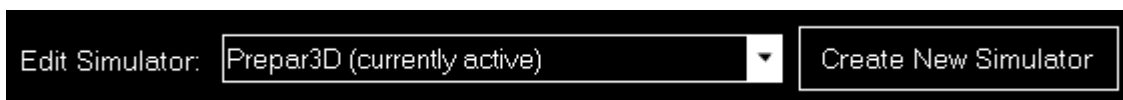
But although a lot of very detailed customization options are available in this modules, FS-FlightControl is designed in a way that you do not have to touch anything here to just use the program.

It is perfectly usable with the default settings and only if you need something special then this is the right place to look at.

Simulator Related Settings

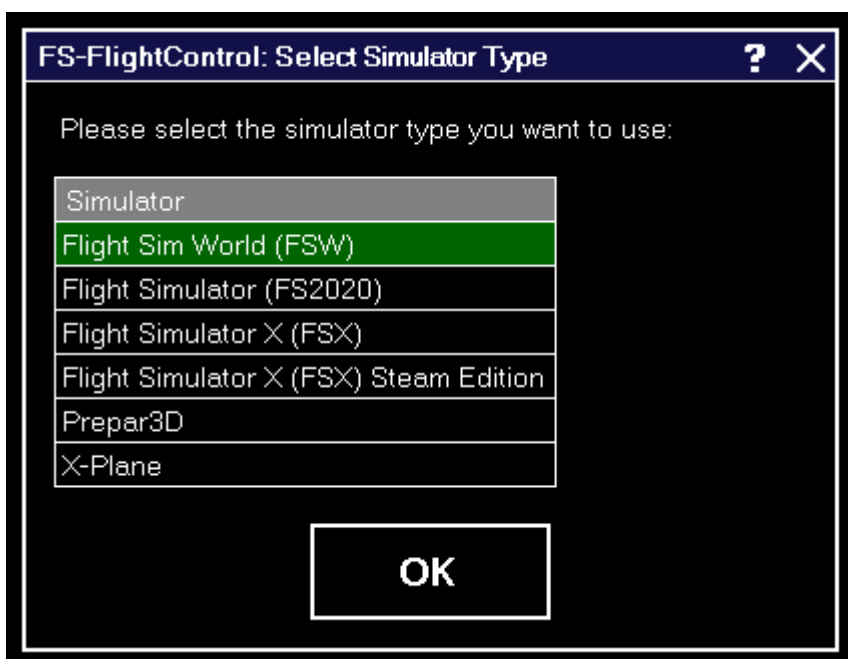
All settings in this area will be saved together with the corresponding simulator.

Simulator



At the very first program start one simulator is automatically created, but you can add more simulators and then switch between them at any time.

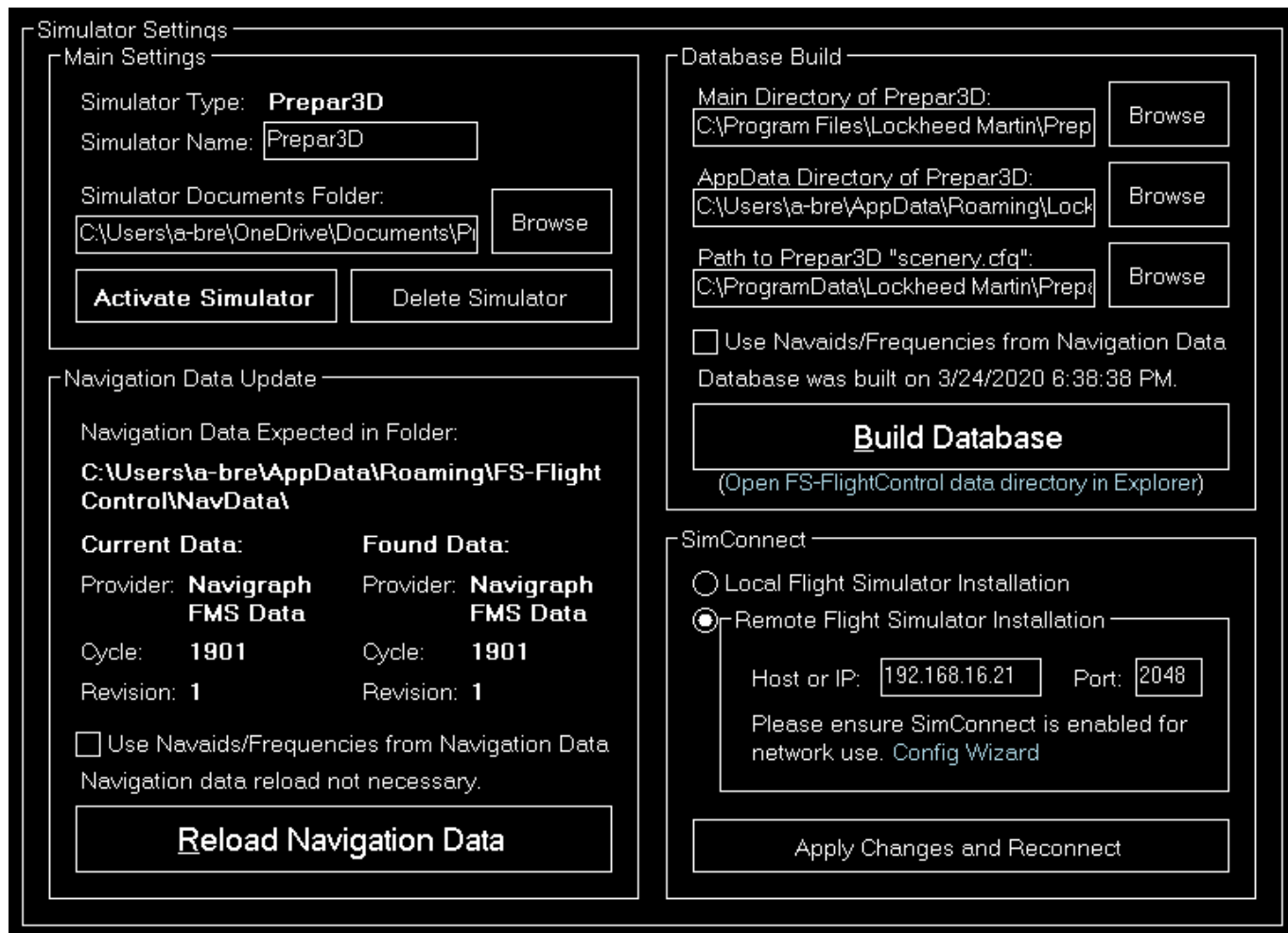
Select Simulator Type



After you have clicked on the button Create New Simulator this dialog will appear asking you

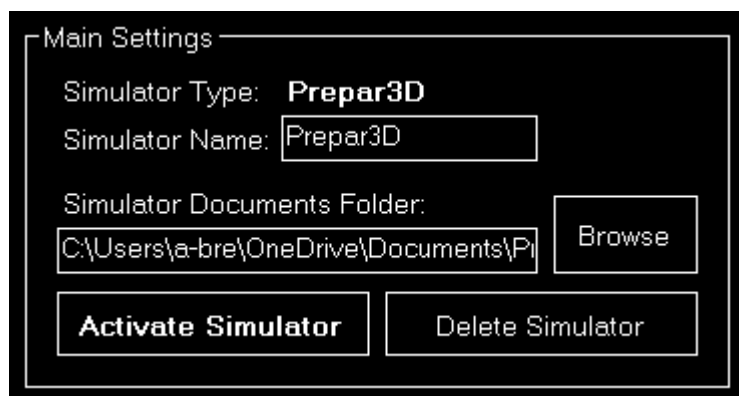
which type of simulator you want to create.

Simulator Settings for Prepar3D/FSX/FSW



If a simulator of type Prepar3D, FSX or FSW is selected these settings will be available.

Main



Below the not changable simulator type you can define a custom name for this simulator.

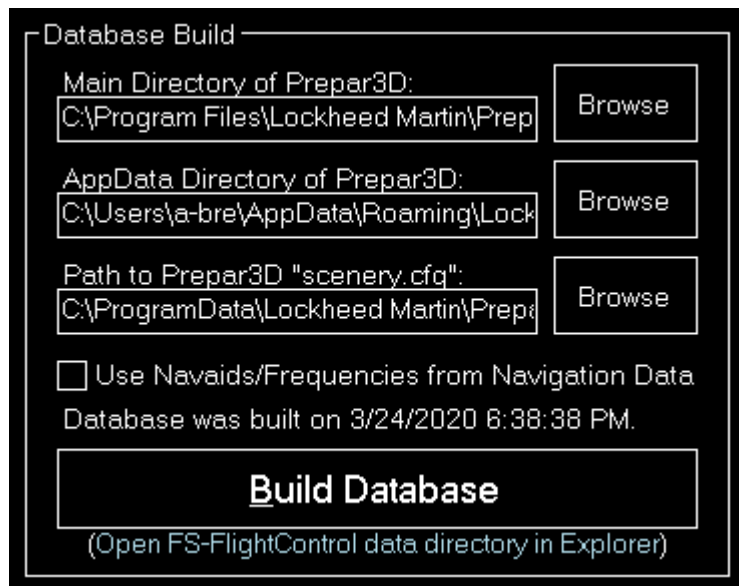
Additionally you can choose the simulator documents folder which is automatically detected if the

simulator is installed locally.

If the selected simulator is currently not active, you can use the buttons **Activate Simulator** to activate it or **Delete Simulator** to delete it again.

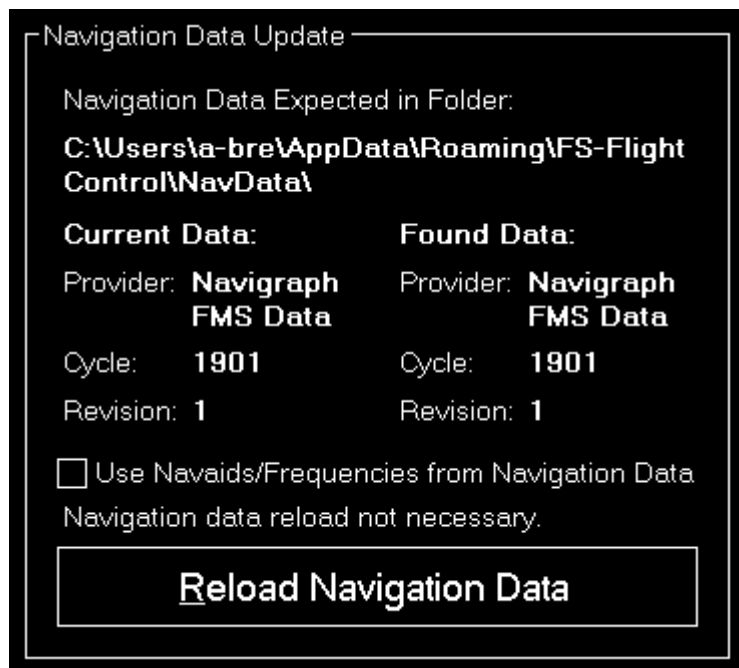
 **Note:** You can change the active simulator also by clicking on the connection status in the [Title Bar](#).

Database Build



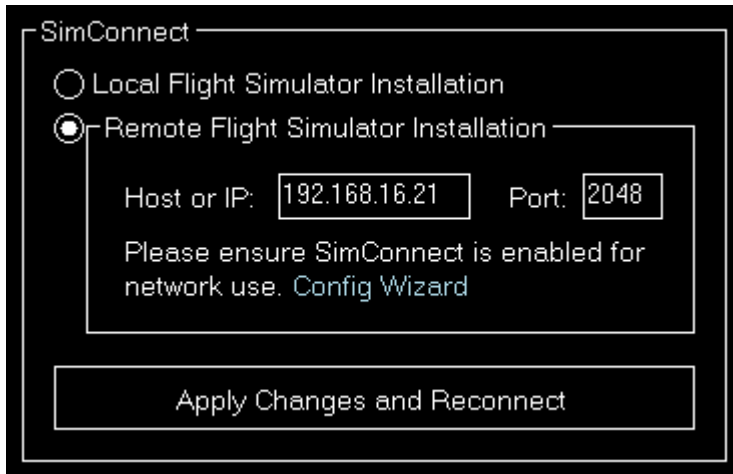
The database build is explained in the [Database Build](#) installation section.

Navigation Data Update



This area is explained in the [Navigation Data Update](#) dialog section.

SimConnect



SimConnect

Local Flight Simulator Installation

Remote Flight Simulator Installation

Host or IP: Port:

Please ensure SimConnect is enabled for network use. Config Wizard

Apply Changes and Reconnect

You can choose here if FS-FlightControl should connect to a local or remote flight simulator installation.

Remote Flight Simulator Installation




Remote Flight Simulator Installation

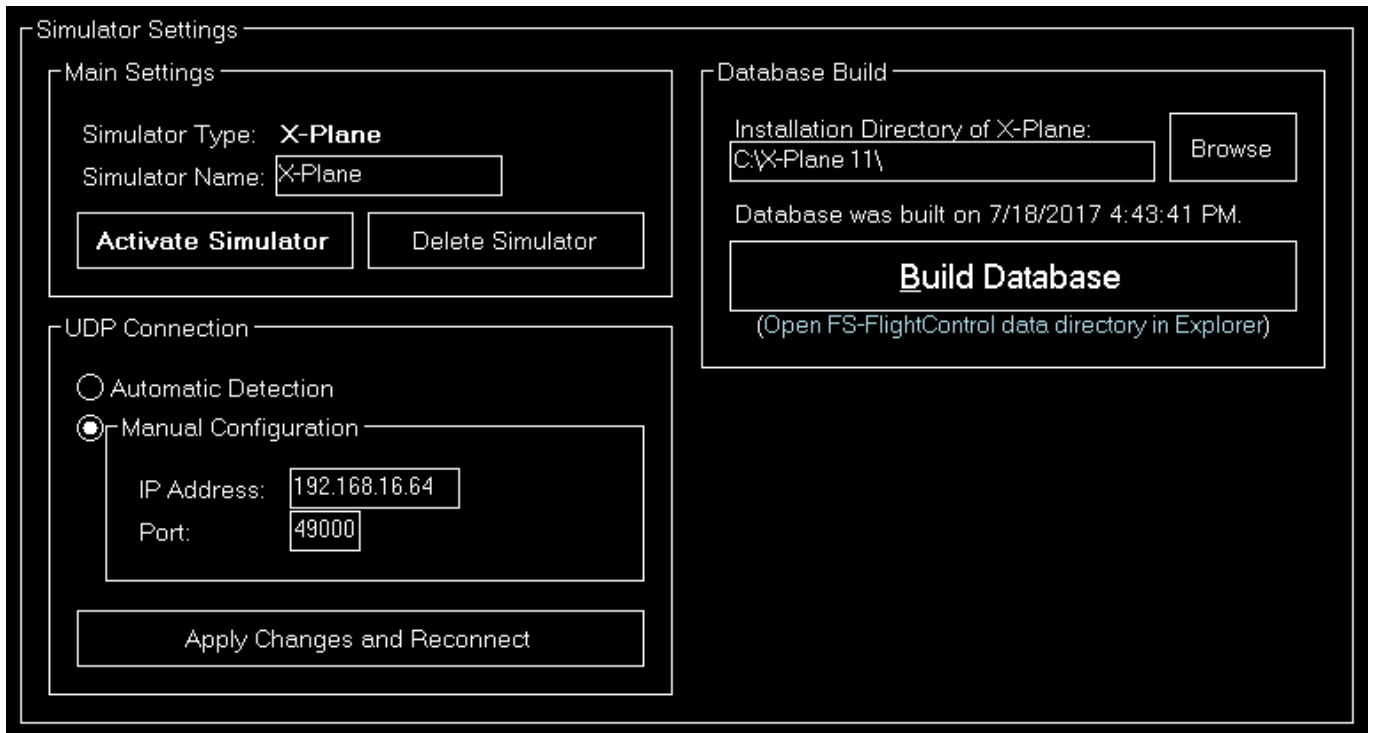
Host or IP: Port:

Please ensure SimConnect is enabled for network use. Config Wizard

If you want FS-FlightControl to access a flight simulator installation that is not located on the same computer as FS-FlightControl itself, these SimConnect Network Access parameters need to be defined.

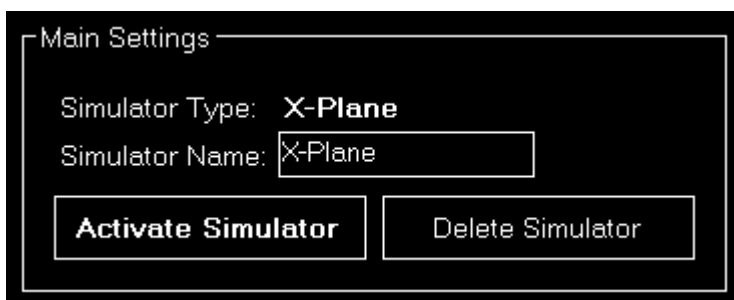
 Note: To make this configuration as easy as possible you can use the [SimConnect Network Wizard](#).

Simulator Settings for X-Plane



If a simulator of type X-Plane is selected these settings will be available.

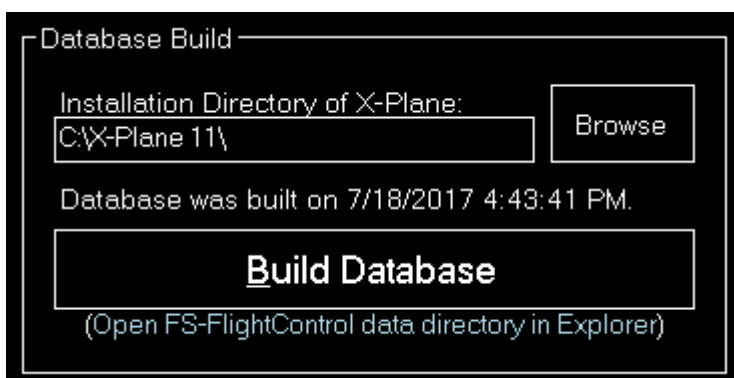
Main



Below the not changable simulator type you can define a custom name for this simulator.

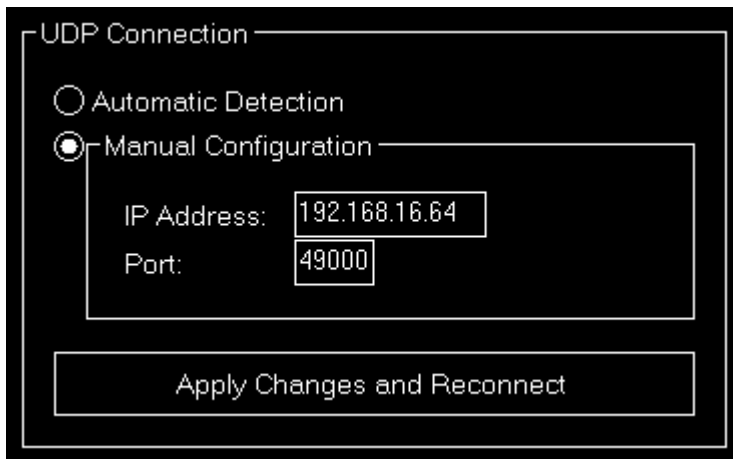
If the selected simulator is currently not active, you can use the buttons `Activate Simulator` to activate it or `Delete Simulator` to delete it again.

Database Build



The database build is explained in the [Database Build](#) installation section.

UDP Connection



UDP Connection

Automatic Detection

Manual Configuration

IP Address:

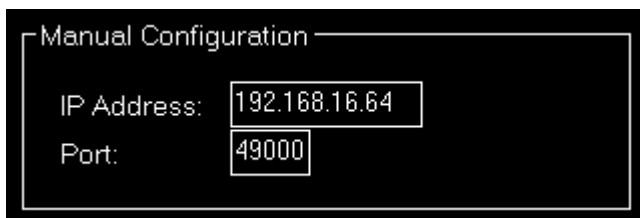
Port:

Apply Changes and Reconnect

You can choose here if the connection parameters should be detected automatically or you want to set them manually.

In most cases all connection parameters can be automatically detected even if X-Plane does not run on the same computer as FS-FlightControl.

Manual Configuration



Manual Configuration

IP Address:

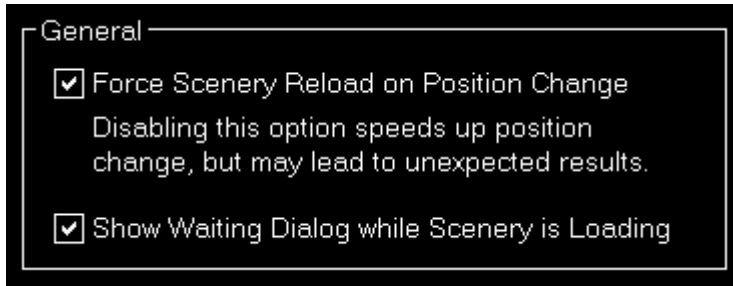
Port:

But if the automatic detection does not work for any reason, you can configure the connection manually here.


Position

These settings are related to the [Approach Training](#) module.

General



You can choose here if the scenery should be reloaded after a position is changed.

 Note: The forced scenery reload is enabled by default as disabling it may lead to unexpected results (like aircraft crash) especially if the new location is far away from the old one.


Conditions

These settings are related to the [Conditions](#) module.

Weather Engine



Let FS-FlightControl know here which software is used as weather engine to ensure all features of the [Conditions](#) module work properly.

 Note: For Active Sky additional parameters need to be entered in the [Third Party](#) settings first.

Third Party

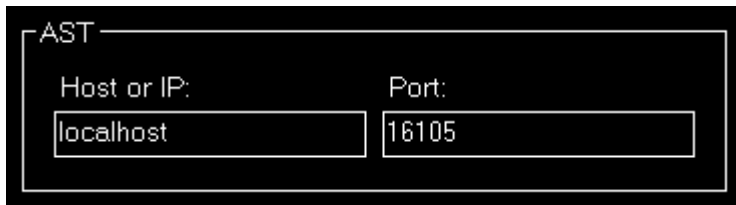
Here you can define necessary parameters to connect to third party products supported by FS-FlightControl.

ProSim



The host or IP as well as the port that should be used to connect to ProSim can be entered here. The ProSim connection then can be used in the [Flight Plan](#) and [Failures](#) modules.

AST



The host or IP as well as the port that should be used to connect to AST (Aircraft Simulation Technology) can be entered here. The AST connection then can be used in the [Failures](#) module.

Project Magenta



The path to the NetDir of Project Magenta can be entered here. The Project Magenta connection then can be used in the [Flight Plan](#) module; the [Failures](#) module uses FSUIPC to connect to Project Magenta.

Flight Sim Labs




The path to the FSLabs directory of Flight Sim Labs below the flight simulator directory can be entered here. The direct Flight Sim Labs connection then can be used in the [Flight Plan](#) module.

Brunner Elektronik



The host or IP as well as the TCP port that should be used to connect to the CLS2Sim software by Brunner Elektronik can be entered here. The Brunner Elektronik connection then can be used in the [Motion](#) module.

 Note: CLS2Sim version v3.20.0 or newer is required.

 Note: Please make sure that Remote control is enabled in the CLS2Sim settings and the TCP port is set accordingly (only TCP is needed for FS-FlightControl connection).

Active Sky



The host or IP as well as the port that should be used to connect to Active Sky 16 (SP1 required) can be entered here. The Active Sky connection then can be used in the [Conditions](#) module.

PFPX



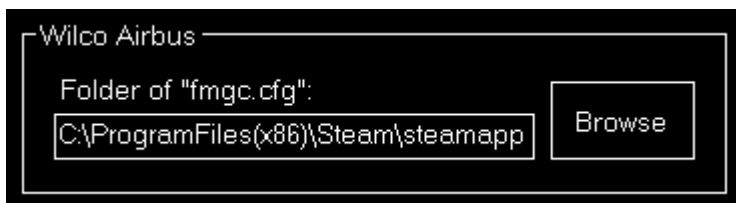
You can enter the path to the PFPX documents directory here. The PFPX connection then can be used in the [Flight Plan](#) module.

Aerosoft Airbus



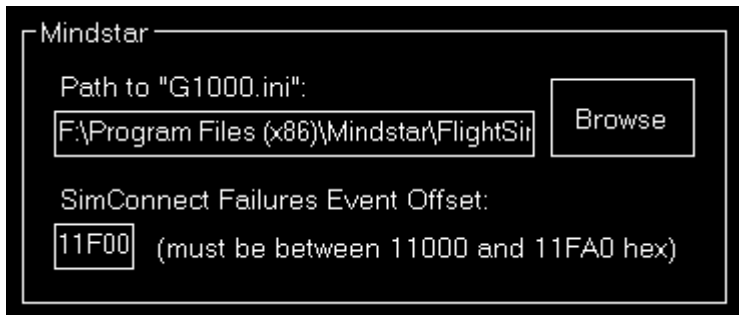
Now you can enter the path to the Aerosoft Airbus documents directory (also the older Extended Version is supported) here. The Aerosoft Airbus connection then can be used in the [Flight Plan](#) module.

Wilco Airbus



You can enter the path to the Wilco/FeelThere Airbus directory here. The Wilco Airbus connection then can be used in the [Flight Plan](#) module.

Mindstar




You can enter the path to the Mindstar G1000 .ini file here. The Mindstar connection then can be used in the [Failures](#) module.

Additionally the offset for the SimConnect event IDs need to be specified as hex value. Starting from this ID the SimConnect events will be assigned to the Mindstar G1000 failures.

Flight1



The host or IP as well as the port that should be used to connect to Flight1 VISPRO flight simulator plug-in can be entered here. The Flight1 connection then can be used in the [Failures](#) module.

 **Note:** To be able to trigger the Flight1 G1000 failures from FS-FlightControl not only the Flight1 G1000 plug-in needs to be installed in flight simulator, but also the Flight1 VISPRO plug-in.

General



Additional you can define the time interval for third party synchronization here.

Aircraft Related Settings

All settings in this area will be saved together with the corresponding aircraft profile if aircraft related settings are enabled.

Aircraft Profile



By default aircraft related settings are disabled as this is not needed for many users, especially also if you only use FS-FlightControl with one specific aircraft type.

But if you want to use FS-FlightControl together with very different aircraft types it makes sense to enable aircraft related settings here.

Profile Settings



If aircraft related settings are enabled the profile settings section gets enabled as well.

You can edit or create new aircraft profiles here and change the flight simulator aircrafts that are assigned to the current aircraft profile.

Additionally you can copy all settings from another profile or revert all settings to default.

Position

These settings are related to the [Approach Training](#) module.

Final Position

Final Position

Short Final:	<input type="text" value="3"/>	NM
Long Final:	<input type="text" value="8"/>	NM
Vertical Offset to Glideslope (+higher, -lower):	<input type="text" value="0"/>	ft
Horizontal Offset to Glideslope (-left, +right):	<input type="text" value="0"/>	ft

Here you can define the distance of the short and long final approach as well as a vertical and horizontal offset to the glideslope if you want.

Vectors Position

Vectors Position

Vector Leg Distance:	<input type="text" value="2"/>	NM
Final Leg Distance:	<input type="text" value="6"/>	NM
Final Intercept Angle:	<input type="text" value="30"/>	°

The distances for the vector positions can be changed here as well as the final intercept angle.

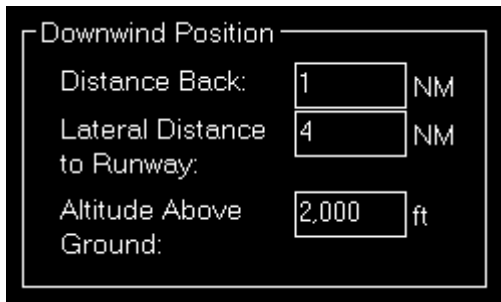
Base Position

Base Position

Base Leg Distance:	<input type="text" value="4"/>	NM
Final Leg Distance:	<input type="text" value="6"/>	NM

Define here the distances for the base positions.

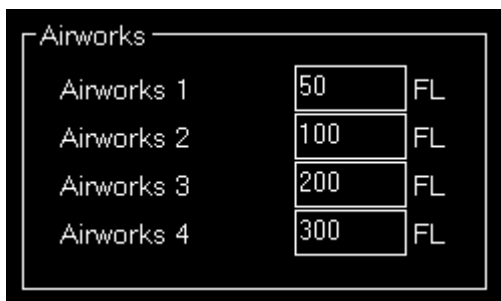
Downwind Position



Here you can define the lateral distance to the runway for the downwind positions.

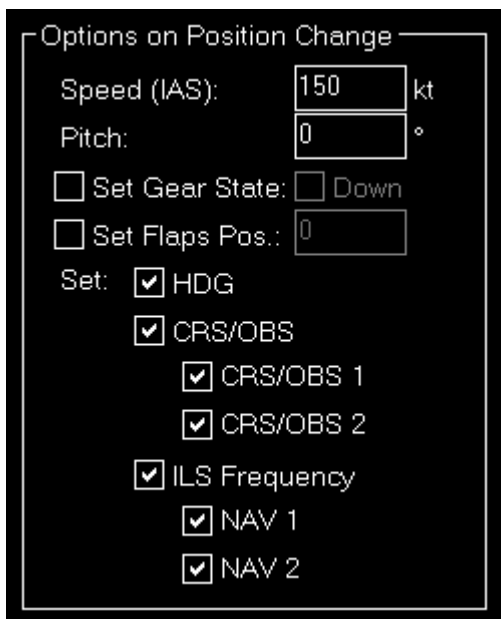
In contrast to the other positions where the altitude is calculated based on the runway glideslope automatically, the altitude for the downwind positions can be customized here.

Airworks



You can define the flight levels of the four airworks buttons here.

Options on Position Change



Depending on the aircraft capabilities you can change the parameters that are used when the aircraft is positioned.

This includes whether the heading, course (CRS) respectively omni bearing selector (OBS) or ILS

frequency (if the runway is ILS enabled) should be set automatically with the aircraft position change to a certain approach.

Map Colors

These settings are related to the [Moving Map](#) module.

Colors and Text Settings

In this area you can highly customize the appearance of the map.

We decided to put this into the aircraft related settings. Although this seems not to be aircraft related at first sight, but this enables you to emphasis certain map parts based on the currently loaded aircraft: For example when using a small aircraft you might want to highlight more the small gates and do not care a lot about ILS, but when using a big jet the large gates are much more interesting. Same goes for other parts on the map which might be more interesting for certain aircraft types than others.

Select map type: Normal Normal for Print Street Map Satellite Map Height Map

All colors and text sizes can be defined per map type.

Therefore please first select the map type.

Colors and Text Sizes for Map Type

Structure Color	Min. Zoom	Text Color	Min. Zoom	Font Size
User Aircraft	<input type="range"/>	User Aircraft Info	<input type="range"/>	<input type="text" value="7"/>
AI Aircraft	<input type="range"/>	AI Aircraft Info	<input type="range"/>	<input type="text" value="7"/>
VATSIM Aircraft	<input type="range"/>	VATSIM Airc. Info	<input type="range"/>	<input type="text" value="7"/>
VATSIM Airport	<input type="range"/>	(Used to draw APP, TWR and GND cycles.)		
VATSIM FIR/UIR	<input type="range"/>	VAT. FIR/UIR Info	<input type="range"/>	<input type="text" value="10"/>
IVAO Aircraft	<input type="range"/>	IVAO Aircraft Info	<input type="range"/>	<input type="text" value="7"/>
IVAO Airport	<input type="range"/>	(Used to draw APP, TWR and GND cycles.)		
IVAO FIR/UIR	<input type="range"/>	IVA. FIR/UIR Info	<input type="range"/>	<input type="text" value="10"/>
PilotEdge Aircraft	<input type="range"/>	PilotEdge Aircraft	<input type="range"/>	<input type="text" value="7"/>
PilotEdge Airport	<input type="range"/>	(Used to draw APP, TWR and GND cycles.)		
PilotEdge FIR	<input type="range"/>	PilotE. FIR Info	<input type="range"/>	<input type="text" value="10"/>
Airport	<input type="range"/>	Airport Name	<input type="range"/>	<input type="text" value="10"/>
Runway	<input type="range"/>	Runway Ident	<input type="range"/>	<input type="text" value="8"/>
ILS	<input type="range"/>	ILS Ident	<input type="range"/>	<input type="text" value="8"/>
Axis	<input type="range"/>			
Marker	<input type="range"/>	Marker Type	<input type="range"/>	<input type="text" value="8"/>
Taxi Path	<input type="range"/>	Taxi Point Name	<input type="range"/>	<input type="text" value="8"/>
Taxi Center Line	<input type="range"/>			
Taxi Holding Point	<input type="range"/>			
Tower	<input type="range"/>			
VOR	<input type="range"/>	VOR Name	<input type="range"/>	<input type="text" value="8"/>
NDB	<input type="range"/>	NDB Name	<input type="range"/>	<input type="text" value="8"/>
Airspace	<input type="range"/>	Airspace Name	<input type="range"/>	<input type="text" value="8"/>
Airway	<input type="range"/>	Airway Name	<input type="range"/>	<input type="text" value="8"/>
Waypoint	<input type="range"/>	Waypoint Ident	<input type="range"/>	<input type="text" value="8"/>
Wayp. SID/STAR	<input type="range"/>	Waypoint Ident	<input type="range"/>	<input type="text" value="10"/>
Weather Station	<input type="range"/>	Weath. St. Name	<input type="range"/>	<input type="text" value="8"/>
User POI	<input type="range"/>	User POI Name	<input type="range"/>	<input type="text" value="10"/>
Compass Rose	<input type="range"/>			
Weather Info	<input type="range"/>	Weather Info	<input type="range"/>	<input type="text" value="8"/>
Map Info	<input type="range"/>	Map Info Text	<input type="range"/>	<input type="text" value="8"/>
Holding	<input type="range"/>	Holding Info	<input type="range"/>	<input type="text" value="8"/>
Measure	<input type="range"/>	Measure Info	<input type="range"/>	<input type="text" value="8"/>
Trace Aircraft	<input type="range"/>			
Flight Plan Path	<input type="range"/>			
SID/STAR Path	<input type="range"/>			
Country	<input type="range"/>	Country	<input type="range"/>	<input type="text" value="12"/>
Country Border	<input type="range"/>			
Ocean	<input type="range"/>			
Lake	<input type="range"/>	Lake	<input type="range"/>	<input type="text" value="8"/>
River	<input type="range"/>	River	<input type="range"/>	<input type="text" value="8"/>
Grid	<input type="range"/>	MSA	<input type="range"/>	<input type="text" value="14"/>

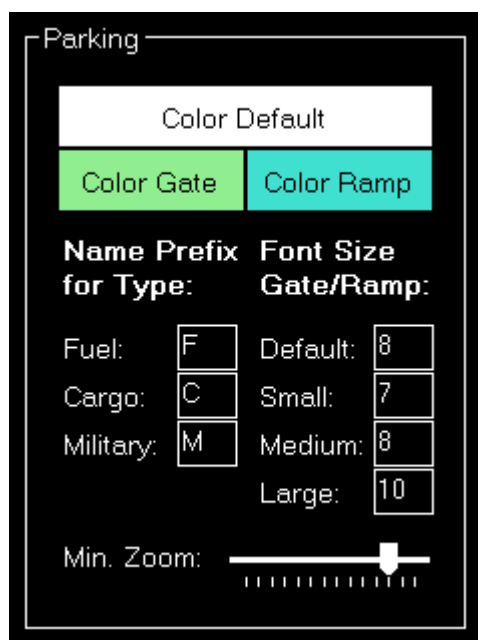
Here all currently defined colors and text sizes are displayed for the selected map type.

The Structure Color is always the color of the item itself, like the runway surface of the runway, whereas Text Color the color of the corresponding text is, like the runway idents of the runway.

The Min. Zoom next to the Structure Color defines the minimum map zoom level needed that this structure (like the runway surface) is shown. Accordingly the second Min. Zoom next to the Text Color defines the minimum map zoom level needed that the corresponding text (like the runway idents) is shown.

Font Size, the last column, enables you to define the size of the displayed text.

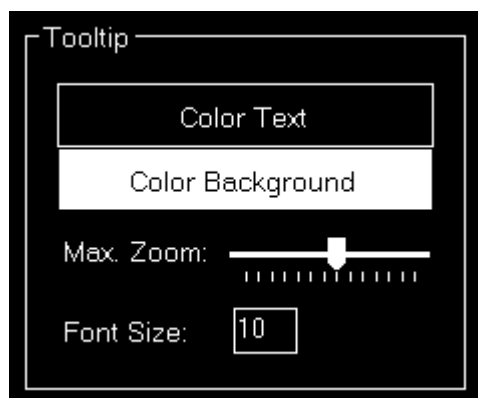
Parking



This area lets you define colors and text sizes for the different parking types like gates and ramps depending on their sizes.

Additionally you can define text prefixes to be used for a certain type like fuel, cargo or military.

Tooltip



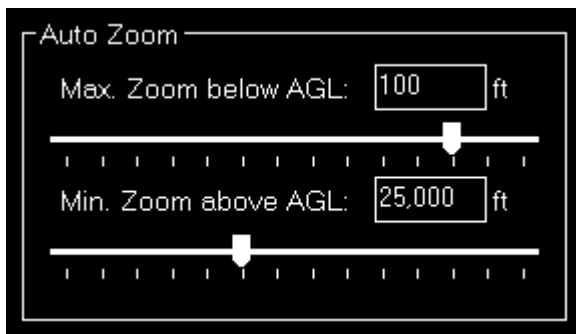
When hovering over certain map elements like an airport a tooltip is displayed shown the full name of the airport.

In this section you can define the appearance of this tooltip as well as the maximum map zoom level until that the tooltip should be displayed.

Map Other

These settings are related to the [Moving Map](#) module.

Auto Zoom



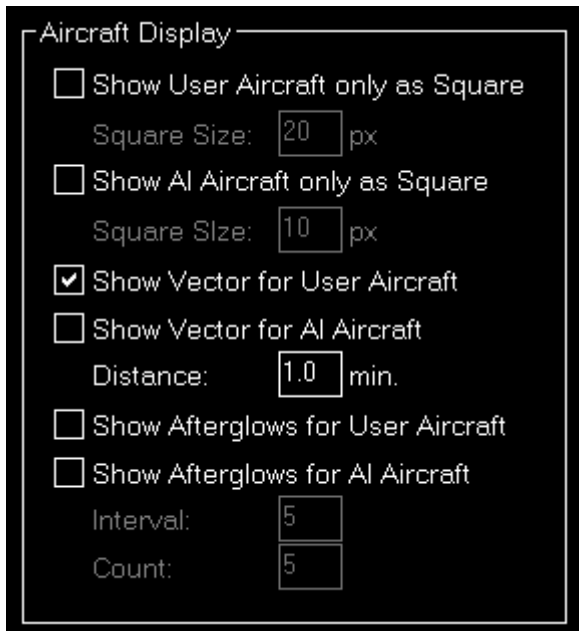
The [Moving Map](#) module also features an auto zoom function which will zoom the map in and out according to the current aircraft altitude.

You can configure this feature here by first entering the maximum zoom level (fully zoomed in) that should be reached if the aircraft is below the entered altitude above ground.

Then, for the upper end, you define the minimum zoom level (fully zoomed out) that should be reached above the entered altitude.

Between these two altitudes the zoom will be equally divided automatically.

Aircraft Display



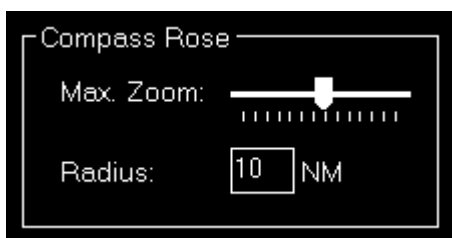
Here you can choose from certain options related to the display of the aircraft on the map.

First you can define if the user and/or AI aircraft are only shown as squares instead of an aircraft image. In this case you can also enter a size for the squares.

Furthermore you can enable or disable a distance vector being displayed in front of each user and/or AI aircraft. In this case you can enter the length of the vector in minutes.

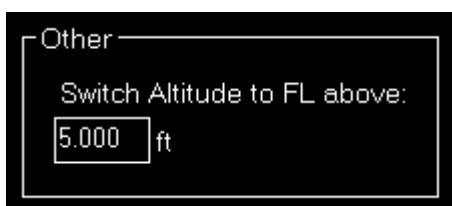
Additionally so called afterglows - dots behind the aircraft - can be enabled or disabled for user and/or AI aircraft. In this case you can enter an interval as well as the number of dots that should be displayed.

Compass Rose




Use these settings to define the maximum zoom level up to the compass rose (when this function is enabled) should be displayed and how wide its radius should be.

Other



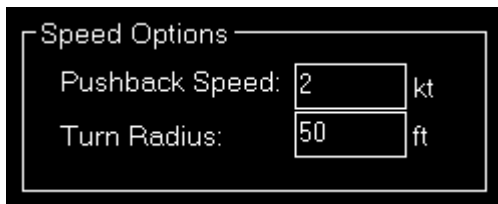
Here you can define at which altitude the display should switch from precise altitude display to flight level.

 Note: Above this altitude it will also switch from show MSL altitude to indicated altitude.

Pushback

These settings are related to the [Pushback](#) module.

Speed Options



Here you can define the pushback speed as well as the turn radius.


Failures

These settings are related to the [Failures](#) module.

Failures Source



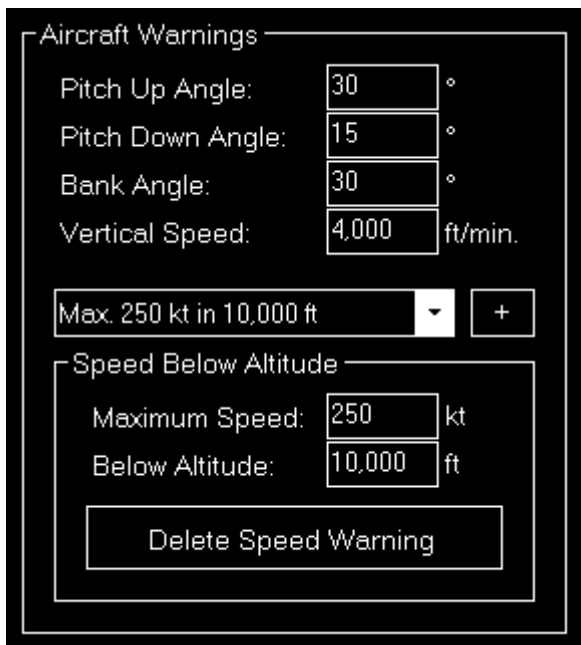
Here you can choose the source of the failures that are displayed in the [Failures](#) module.

 Note: For some options additional parameters need to be entered in the [Third Party](#) settings first.

Aircraft

These settings are related to the [Aircraft](#) module.

Aircraft Warnings



Here you can set limits for some parameters like pitch or bank angle for the aircraft.

Speed Below Altitude




Additionally you can define maximum speeds below certain altitudes above mean sea level (MSL).

These settings are used to change the color of the corresponding value to red on the [Aircraft](#) module and also to shown warning indicators when exporting graph data to Google Earth on the [Flight Recorder](#) module.

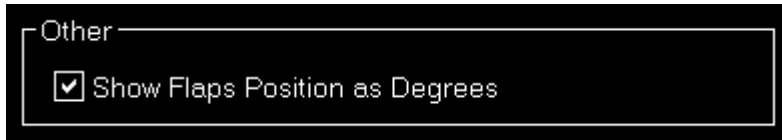
Aircraft-Specific Options



For some third-party add-ons there are some additional options available. You can enable this support here.

 Note: Some third-party add-ons require additional parameters to be entered in the [Third Party](#) settings first.

Other



Here you can define if flap positions should be shown as degree number.

Statistics

These settings are related to the [Flight Recorder](#) module.

Google Earth Export



Define all Google Earth export related settings in this area.

Every certain time interval a flight track point is shown in Google Earth with detailed flight information. You can set this time interval here.

Additionally you can define the range for including VORs, NDBs and waypoints if their export is enabled.

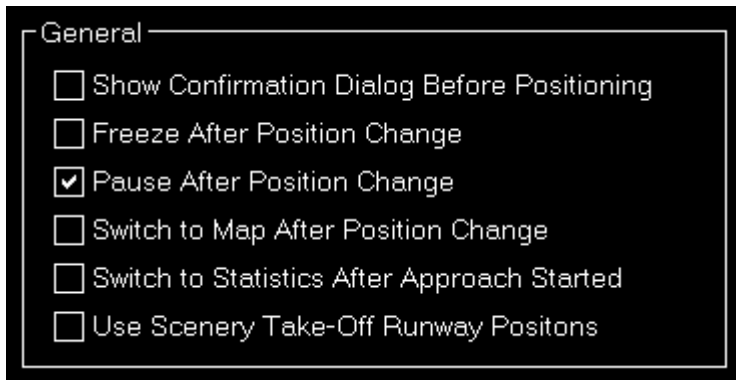
Other Settings

All settings in this area are not simulator and not aircraft related and will be saved globally.

Position

These settings are related to the [Approach Training](#) module.

General

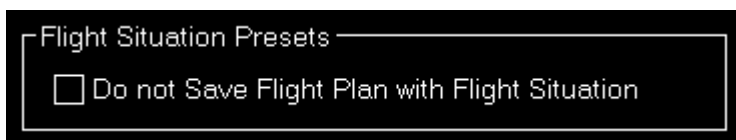


You can enable or disable some automatizations after an aircraft position is changed.

First choose if position freeze or pause should be enabled after aircraft move.

Additionally you can define if the program should automatically switch to the [Moving Map](#) module after a position change respectively to the [Flight Recorder](#) module when an approach is started.

Flight Situation Presets



You can choose here to not automatically save the flight plan together with a flight situation preset.

Map

These settings are related to the [Moving Map](#) module.

Data Update Rate



You can define here how often the map view gets updated.


By default that is set to once per second.

Custom Update Rate

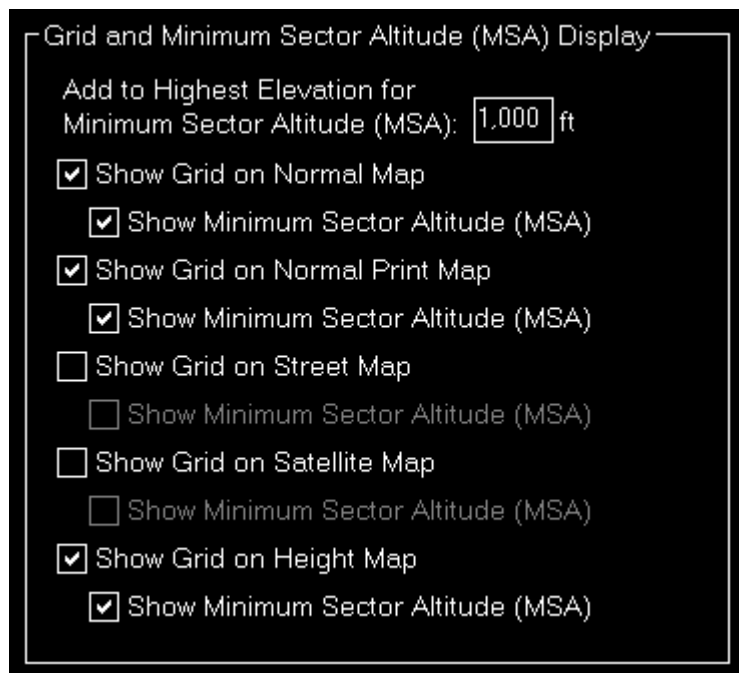


If you uncheck the Default Update Rate checkbox you can define the update rate yourself.

The slider then ranges from very low (every 60 visual frames on flight simulator) to very high (every single visual frame).

 Note: Please keep in mind that setting the data update rate to very high may lead to performance issues.

Grid and Minimum Sector Altitude (MSA) Display



First you can define here the altitude that is added to the highest elevation in each sector when calculating the Minimum Sector Altitude (MSA).

Additionally you can choose when the map grid including the Minimum Sector Altitude (MSA) is displayed in the first place.

Print Options

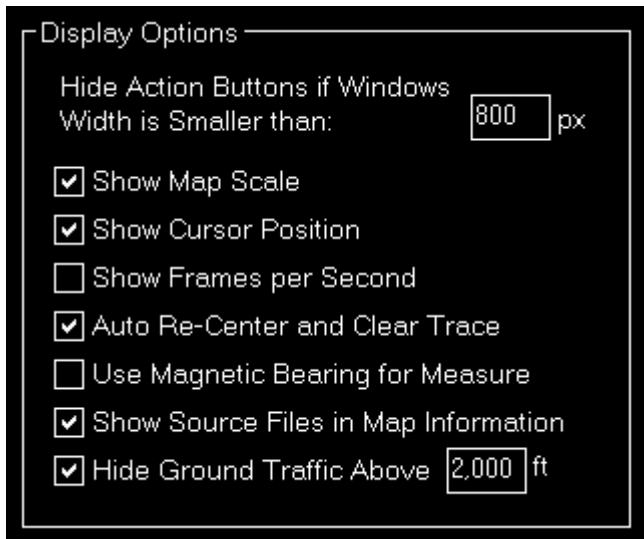


For map printing you can define here which printer should be used.

Additionally, if you own a commercial license, you can also change the footer text or remove it completely.


Within the footer text you may use the placeholders {date} and {time} to insert the current date and time.

Display Options



You can define several display options here.

First you can set a window width below that the left and right action buttons are hidden.

 Note: This is only used for detached map windows.

Below that you can choose if you want the map scale, cursor position and frames per second displayed on the bottom of the map view or not.

Additionally you can disable the automatic re-center of the map and clear aircraft trace (if enabled) after the aircraft position has been changed from the flight simulator itself (after there was a crash, for example).

Online Networks



If you enter here your user ID of the available online networks your own user aircraft will not appear additionally as AI aircraft.

Flight Plan

These settings are related to the [Flight Plan](#) module.

Flight Plan Folder

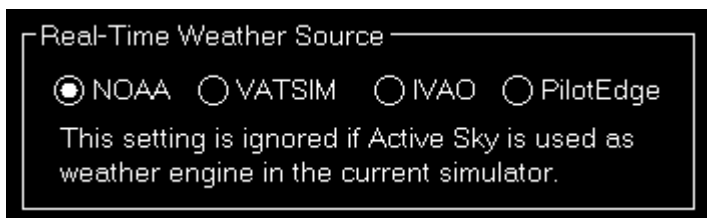


Here you can change the path to the saved flight plans of flight simulator.

Conditions

These settings are related to the [Conditions](#) module.

Real-Time Weather Source



Define here the real-time weather source that should be used for receiving weather METAR data if this is not provided by flight simulator directly.

In this connection you can choose from NOAA (National Oceanic and Atmospheric Administration), VATSIM (Virtual Air Traffic Simulation) and IVAO (International Virtual Aviation Organization).

ILS Visibility

	Decision Height		Runway Visibility	
CAT I	200	ft	550	m
CAT I LTS	200	ft	400	m
CAT II	100	ft	300	m
CAT IIIa	50	ft	180	m
CAT IIIb	30	ft	46	m
CAT IIIc	0	ft	10	m

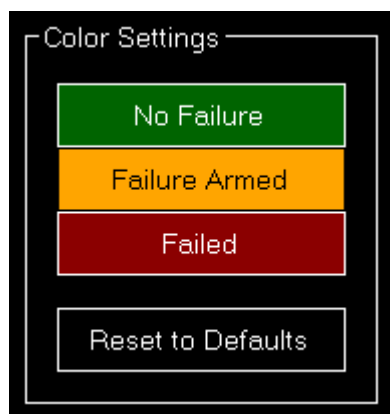
In this section the ILS Visibility presets can be customized.

You can define the decision height as well as the runway visibility for each ILS category.

Failures

These settings are related to the [Failures](#) module.

Color Settings



Use this area to change the colors.

You can also use the button `Reset to Defaults` to revert all your color changes.

Other



Choose here if random failures should be automatically re-enabled on program start if they were enabled before.

Statistics

These settings are related to the [Flight Recorder](#) module.

Color Settings

In this area you can customize all colors used to draw the statistics graphs.



All colors can be defined per display type.

Therefore please first select if you want to change the colors for the normal in program display or for

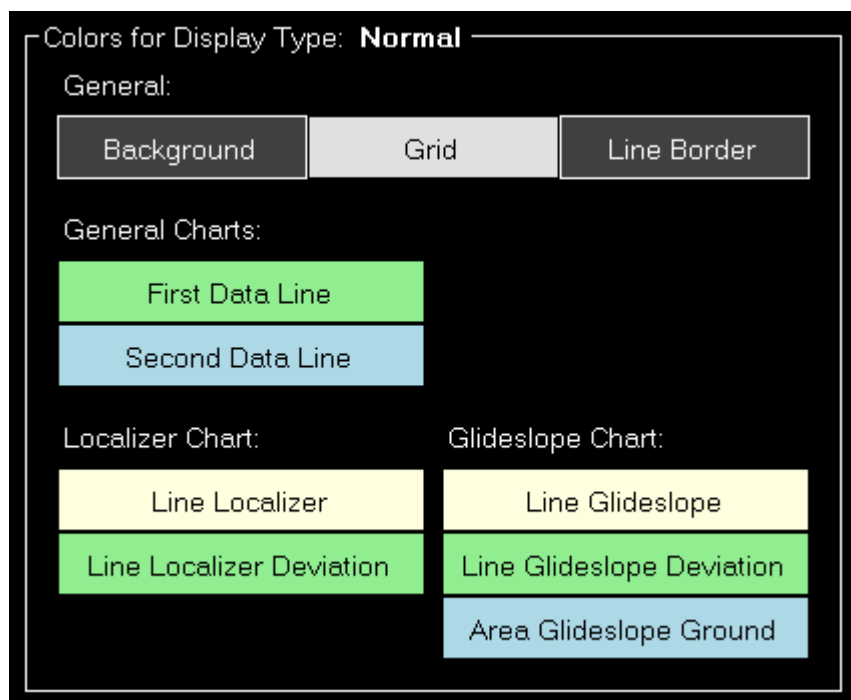
printout.

Revert to Defaults



You can easily revert all colors to their defaults by using the Revert to Defaults button.

Colors for Display Type



Here all currently defined colors are displayed for the selected display type.

Click on any of the button to select a different color.

Print Options



For statistics printing you can define here which printer should be used.

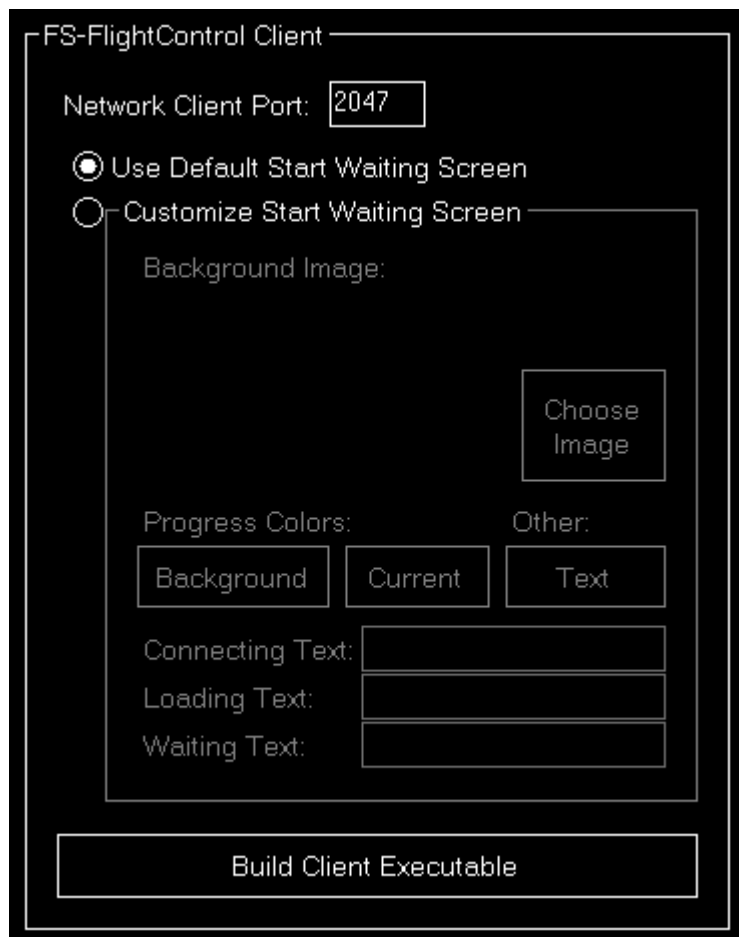
Additionally, if you own a commercial license, you can also change the footer text or remove it completely.

Within the footer text you may use the placeholders {date} and {time} to insert the current date and time.


Network

These settings are related to the [Network](#) module.

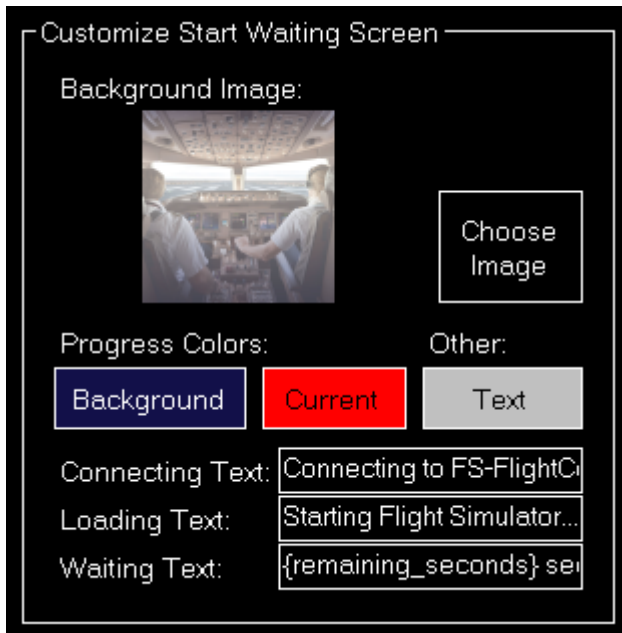
FS-FlightControl Client



First you can change the network client port here that defaults to 2047, but can be changed to any other port number if needed.

 Note: If you change the port you need to re-build the network client executable.

Customize Start Waiting Screen

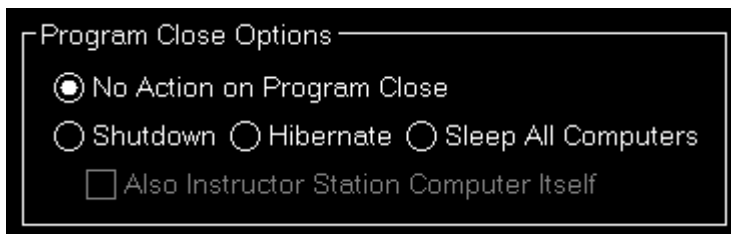


If you own a commercial license you can completely customize the start waiting screen that is shown on the network client computers.

You can select a background image as well as customize the colors and the shown texts.

In the Remaining Text input field you can use the placeholder `{remaining_seconds}` to insert the remaining seconds.

Program Close Options



You can define here if a shutdown, hibernate or sleep action should be sent to all connected network computers when the FS-FlightControl software is closed.

Additionally you can decide if the same action should be executed on the computer running the instructor station itself.

Status Page for Web Display

Status Page for Web Display

Status Page Method:

Output Directly as Web Server

Port:

Save as HTML File

Update Interval: sec.

File Path:

Upload to FTP Server

Update Interval: sec.

Server Host:

Port: Passive

User Name:

Password:

Remote File:

In this area you can define the method that should be used for the status page output.

Output Directly as Web Server

Output Directly as Web Server

Port:

If this method is selected FS-FlightControl will listen on the defined port for HTTP web requests and will reply with the status page accordingly.

Save as HTML File

Save as HTML File

Update Interval: sec.

File Path:

This method will save the status page as HTML file to a certain directory location in the defined time interval.

Upload to FTP Server



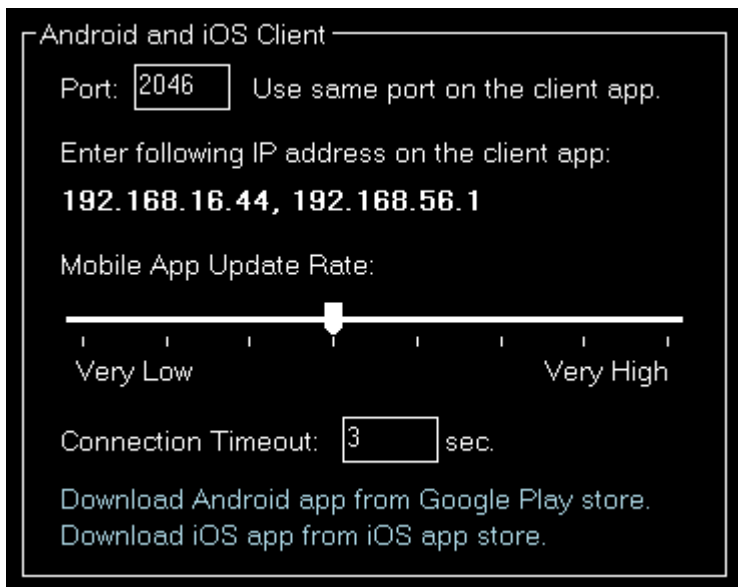
You can also enable this method to automatically upload the status page to a FTP server.

Then you need to define again the update interval as well as all parameters that are needed for FTP server access.

Mobile Devices

This section is related to the mobile devices support.

Android and iOS Client



There is an Android client app that makes it possible to use FS-FlightControl also with your Android Tablet device.

You can define the port here that should be used for the connection. It defaults to 2046.

In the following you can see the IP address that you need to enter in the Android app once for connection.

 **Note:** It rares cases it is possible that there is more than one IP address displayed here. In this case

you just need to try which one works.

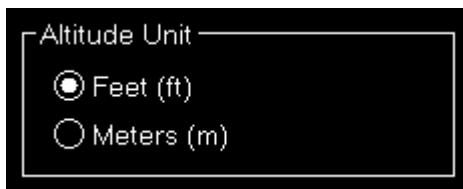
If you should see a Windows Firewall message popping up - normally on program start - asking you to give FS-FlightControl access please confirm that. Only with this approval you will be able to connect with your mobile device.

You can directly download the Android app from the [Google Play store](#) as well as the iOS-App from the [iOS App Store](#).

Units

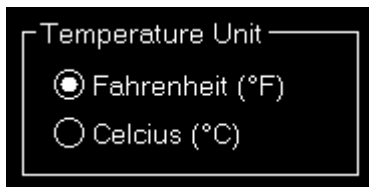
Here all units for input as well as output used across the whole program can be defined.

Altitude Unit



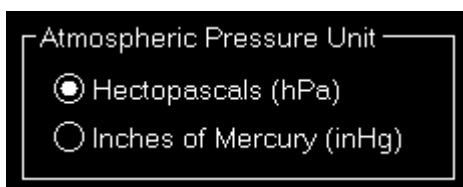
Choose if feet (ft) or meters (m) should be used for altitude values.

Temperature Unit



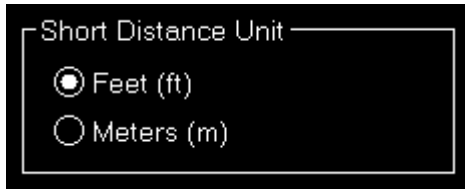
Choose if Fahrenheit (°F) or Celcius (°C) should be used for temperature values.

Atmospheric Pressure



Choose if Hektopascals (hPa) or Inches of Mercury (inHg) should be used for atmospheric pressure values.

Short Distance Unit

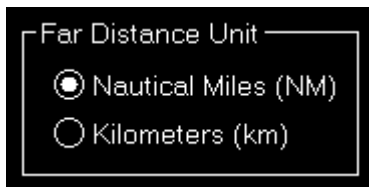
A screenshot of a settings menu titled "Short Distance Unit". It contains two radio button options: "Feet (ft)" which is selected, and "Meters (m)".

Short Distance Unit

- Feet (ft)
- Meters (m)

Choose if feet (ft) or meters (m) should be used for short distance values.

Far Distance Unit

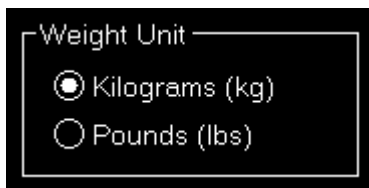
A screenshot of a settings menu titled "Far Distance Unit". It contains two radio button options: "Nautical Miles (NM)" which is selected, and "Kilometers (km)".

Far Distance Unit

- Nautical Miles (NM)
- Kilometers (km)

Choose if nautical miles (NM) or kilometers (km) should be used for far distance values.

Weight Unit

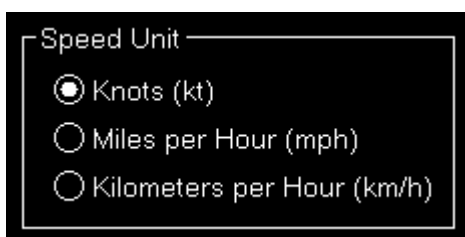
A screenshot of a settings menu titled "Weight Unit". It contains two radio button options: "Kilograms (kg)" which is selected, and "Pounds (lbs)".

Weight Unit

- Kilograms (kg)
- Pounds (lbs)

Choose if kilograms (kg) or pounds (lbs) should be used for weight values.

Speed Unit

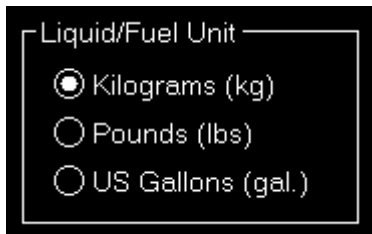
A screenshot of a settings menu titled "Speed Unit". It contains three radio button options: "Knots (kt)" which is selected, "Miles per Hour (mph)", and "Kilometers per Hour (km/h)".

Speed Unit

- Knots (kt)
- Miles per Hour (mph)
- Kilometers per Hour (km/h)

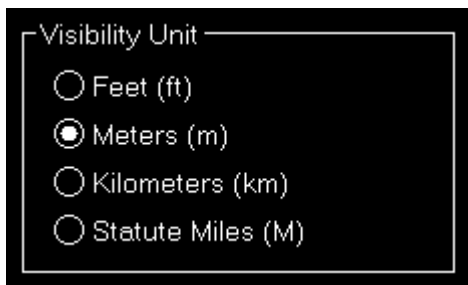
Choose if knots (kt), miles per hour (mph) or kilometers per hour (km/h) should be used for speed values.

Liquid/Fuel Unit



Choose if kilograms (kg), pounds (lbs) or US gallons (gal.) should be used for liquid and fuel values.

Visibility Unit

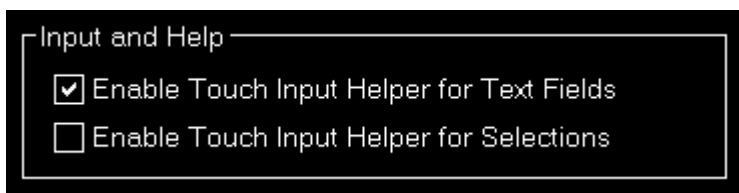


Choose if feet (ft), meters (m), kilometers (km) or statute miles (M) should be used for visibility values.


Other

In this section all other settings are located that do not fit into another category.

Input and Help



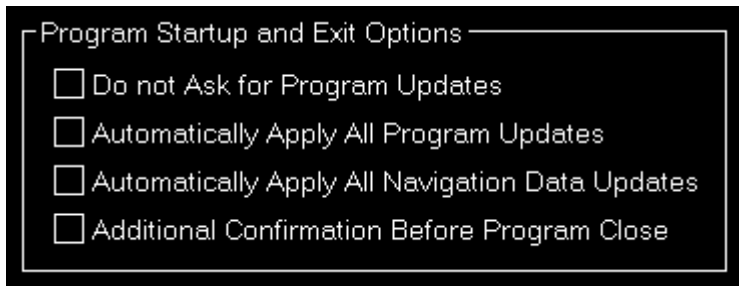
Here you can define if a touch input helper should be used for text and selection input fields.

 **Note:** While the Android or iOS app is connected both touch input helpers are activated automatically.

Additionally you can choose if the small help icons should be displayed in the top right corner of all sections.

Furthermore you can make the FS-FlightControl window to stay always on top of all other applications.

Program Startup Options



To allow a program start without user interaction you can define here that program updates as well as navigation data updates should always be applied without confirmation by the user.

Alternatively you can also disable the question regarding an update completely (which we do not recommend).

Furthermore you have the option here to activate an additional confirmation message before the program is really closed - in case of accidental clicks on the Exit button.

Online Network Status URLs



Here you can change the URLs where FS-FlightControl gets the status updates for VATSIM, IVAO and PilotEdge from.

This might be useful if you operate your own multi-player server. If you use, for example, the VATSIM format for providing online client information, you can inject this information into FS-FlightControl by pointing the VATSIM URL here to your own server.

You can also reset these URLs to their defaults.

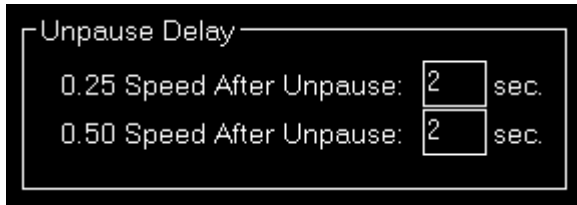
Color Settings



Use this area to change colors used all over the software.


You can also use the button **Reset to Defaults** to revert all your color changes.

Unpause Delay



You can configure the unpause delay to your needs here.

This will be used to slowly accelerate your aircraft after the simulator was unpaused through FS-FlightControl.

 Note: This option has no effect if you are connected to X-Plane.

FS-FlightControl Steam Products Manual:
<https://www.fs-flightcontrol.com/en/steam/manual/>



PDF Generated on:
2026/05/30 02:42